

Anvan-W Travese Lari

Rete Tan sou Twotwa Jis Le Siyal
Pou Pyeton Make "WALK"

Asire-W Tout Machin Kanpe

Gade a goch, Epi a dwat, Epi a goch
Anko, Anvan-W Desan Twotwa

Toujou Travese Lan Pasaj Pou
Pyeton Le Wap Travese Lari

Leve Men-W Pou Chofè Yo
Kapab Wèw

Safety Tips for Pedestrians

1. Before Crossing the Street

- Remain on the sidewalk until the pedestrian crossing signal indicates "WALK."
- Make sure all cars have stopped.
- Look left, right, and left again before stepping off the sidewalk.
- Always cross the street in the pedestrian crosswalk.
- Extend your arm to be visible.

2. While Crossing the Street

- Keep looking in all directions as you cross and watch out for turning vehicles.

3. Before Crossing in Front of Stopped Car

- Make sure that the vehicle's driver sees you.
- Watch out for cars that may be passing stopped vehicle.

4. Before Crossing Behind a Car

- If you must walk behind a vehicle, make sure it is not backing up.
- Listen for the sound of engines or check if backup lights are on.
- Take similar precautions when walking in a parking lot.

FOR MORE INFORMATION
Metropolitan Planning Organization — (305)-375-1647
or online www.miamidade.gov/mpo.



Kèk Ti

Konsej

Pou Pyeton

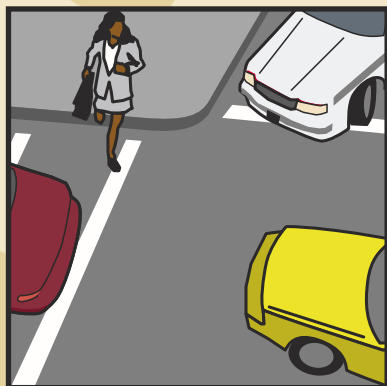
Kapab

Mache An

Sekirite

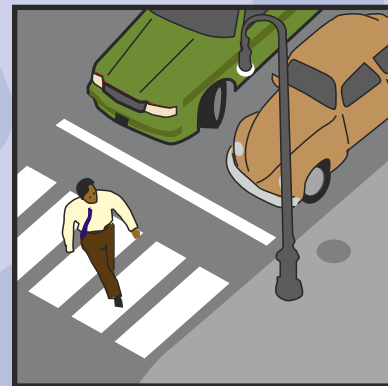
Pandan Wap Traverse Lari

Kontinye Gade Lan tout
Direksyon Lè Wap Traverse Lari
Pou Wè Lè Machin Ap Vire



Anvan-W Travesè Devan Yon Machin Ki Kanpe

Asire-W Chofè Machin Lan Wèw
Fè Atansyon Machin Kap Pase A
Rebò Lot Machin Ki Kanpe



Anvan-W Travesè Deyè Yon Machin



Si-W Genyen Pou Travesè Deyè
Yon Machin. Asiré-W Ke Machin
Lan Pap Fè Bak

Koute Si ou Tande Bri Motè Obyen
Si Limyè Bak Machin Lan Limen

Pran Menm Prekosyon Le-W Lan
Yon Pakin