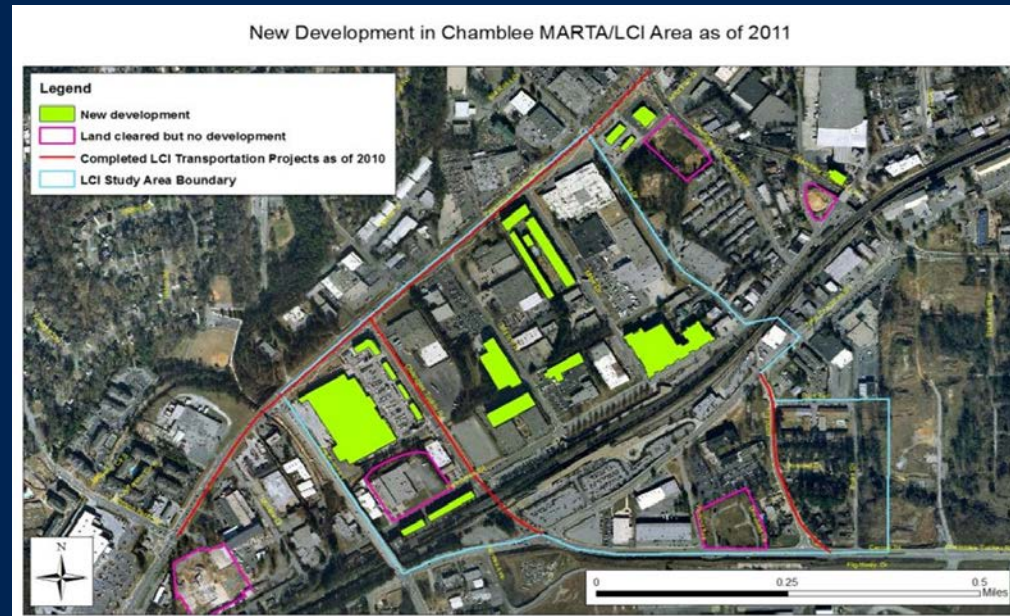




ARC's Regional Role in TOD

ARC's Role in TOD

- Planning
- Data and Research
- Gap Funding
- Convener of Stakeholders



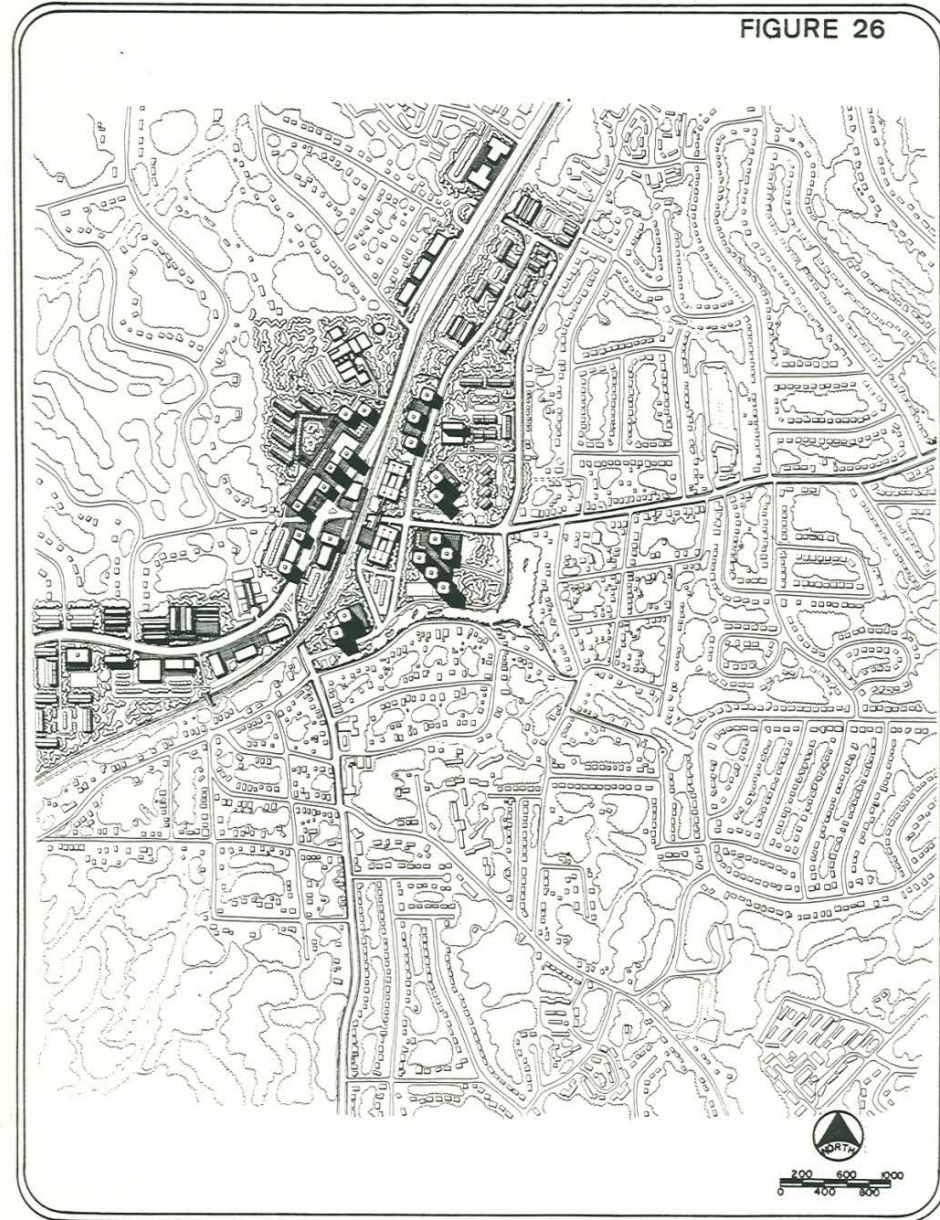
Historical Role

Transit Station Area Development Studies

- Program started in 1972
 - Land Use/Transportation Studies around MARTA referendum systems

URBAN DESIGN ILLUSTRATION - TOTAL BUILD OUT IN 2000
BROOKHAVEN STATION AREA

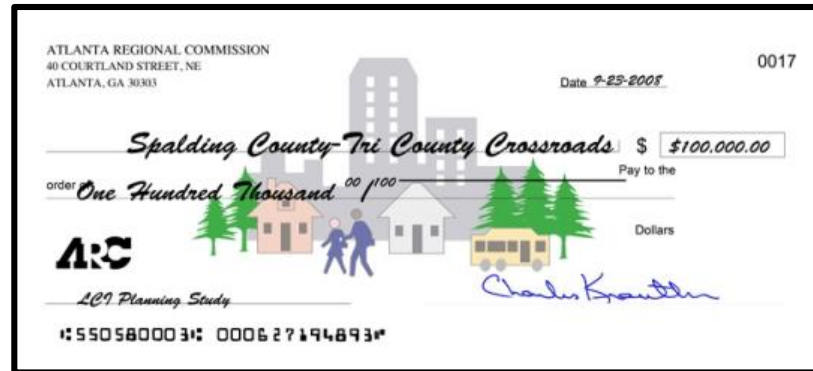
FIGURE 26



LCI Authorization and Funding

- Funding provided in Regional Transportation Plan (RTP) and programmed in Transportation Improvement Program (TIP)
- Use Surface Transportation Program (STP-Urban) funds, i.e. funds sub-allocated to MPOs with population over 200,000

- \$1 Million per year studies
- \$500 million for Transportation Projects to 2040.



Since 1999, LCI has awarded:

\$8.5 million to 118 communities for studies,

\$4.9 million for 110 supplemental studies

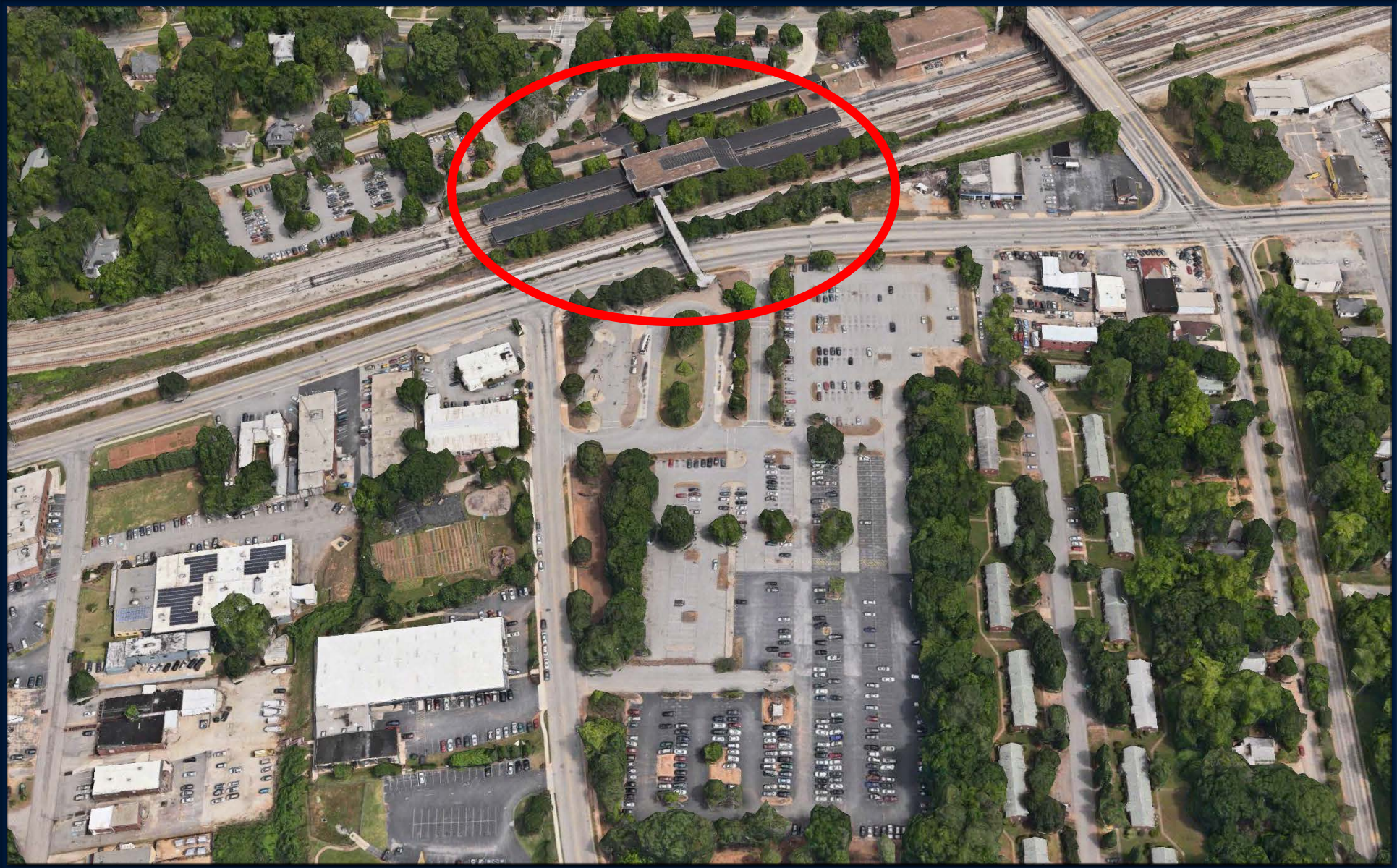
\$187 million for 114 LCI transportation

projects in 67 communities

Total LCI Investment to date: \$200 Million



Livable Centers Initiative



Avondale Station

Avondale Station

- ✧ LCI Awarded in 2002
- ✧ Transportation Funds Awarded for Parking Deck and Streetscape in 2003
- ✧ Funds De-Authorized in 2009
- ✧ City of Decatur and MARTA executed a IGA in 2013/2014
- ✧ RFP and Developer Selected in 2014



AVONDALE

2002 Decatur - Avondale MARTA Station Study
Livable Centers Initiative Final Report - City of
Decatur Livable Centers Initiative Study

503 residential units + 41,500 sf retail + 25,000 sf
institutional space

LIHTC allocation

Construction began in fall 2016



Chamblee



S

H. E. Holme



marta



King Memorial



Edgewood-Candler Park

