



Study Goals

- Prioritize Miami-Dade elementary and K-8 schools for Safe Routes to School (SRTS) infrastructure improvements
- Develop SRTS plans and infrastructure improvements for 10 priority schools
- Prepare FDOT SRTS infrastructure funding applications for the 10 schools



Eligible Schools

- Number of K-5/K-8 public schools – 219
- SRTS plans complete/funding applied – 63
- Number of schools considered in 2011 - 156



Source: Safe Routes to School Guide
National Center for SRTS

Prioritization Factors

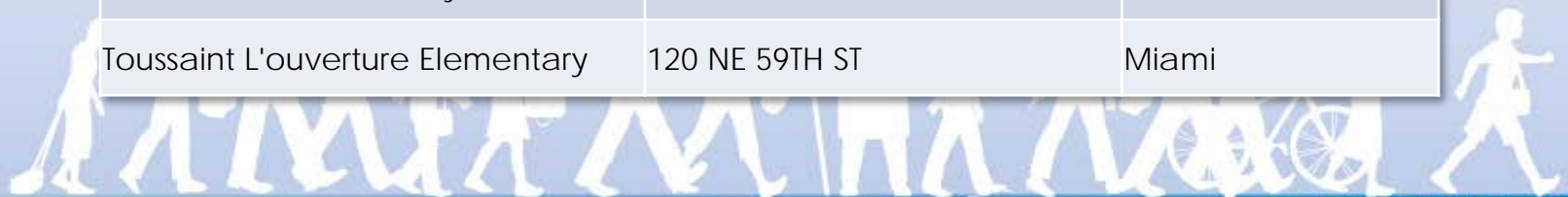
Factor	Notes
Juvenile pedestrian crashes	Five years (2005-2009)
Pedestrian and bicycle crashes	Five years (2005-2009)
Students living within 0.5 miles of school	GIS based estimates
Percent students walking	WalkSafe data
Traffic volume on the nearest major street	FDOT and Miami-Dade County data
Vehicle ownership per household	Miami-Dade MPO LRTP

Prioritization was based on composite rank of individual factors



Ten Priority Schools

School	Address	Municipality
Jesse J. McCrary Jr. Elementary	514 NW 77TH ST	Miami
Kensington Park Elementary	711 NW 30TH AVE	Miami
Linda Lentin K-8 Center	14312 NE 2ND CT	Unincorporated
Natural Bridge Elementary	1650 NE 141ST ST	North Miami
North Hialeah Elementary	4251 E 5TH AVE	Hialeah
Oak Grove Elementary	15640 NE 8TH AVE	Unincorporated
Phillis Wheatley Elementary	1801 NW 1ST PL	Miami
Phyllis Ruth Miller Elementary	840 NE 87TH ST	Miami
Santa Clara Elementary	1051 NW 29TH TER	Miami
Toussaint L'ouverture Elementary	120 NE 59TH ST	Miami



SRTS Plan Development

- Miami-Dade Public Schools Community Traffic Safety Team served as Study Advisory Committee
- Extensive coordination with school staff and parents through meetings and surveys
- Majority of improvements located within 0.5 miles of school

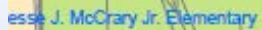


Jesse J. McCrary Jr. Elementary

- Typical improvements
 - Sidewalks and crosswalks
 - Signal upgrades
- Approximate cost - \$125,000*

*Includes contingency, mobilization, maintenance of traffic, preliminary engineering, and construction engineering inspection costs.



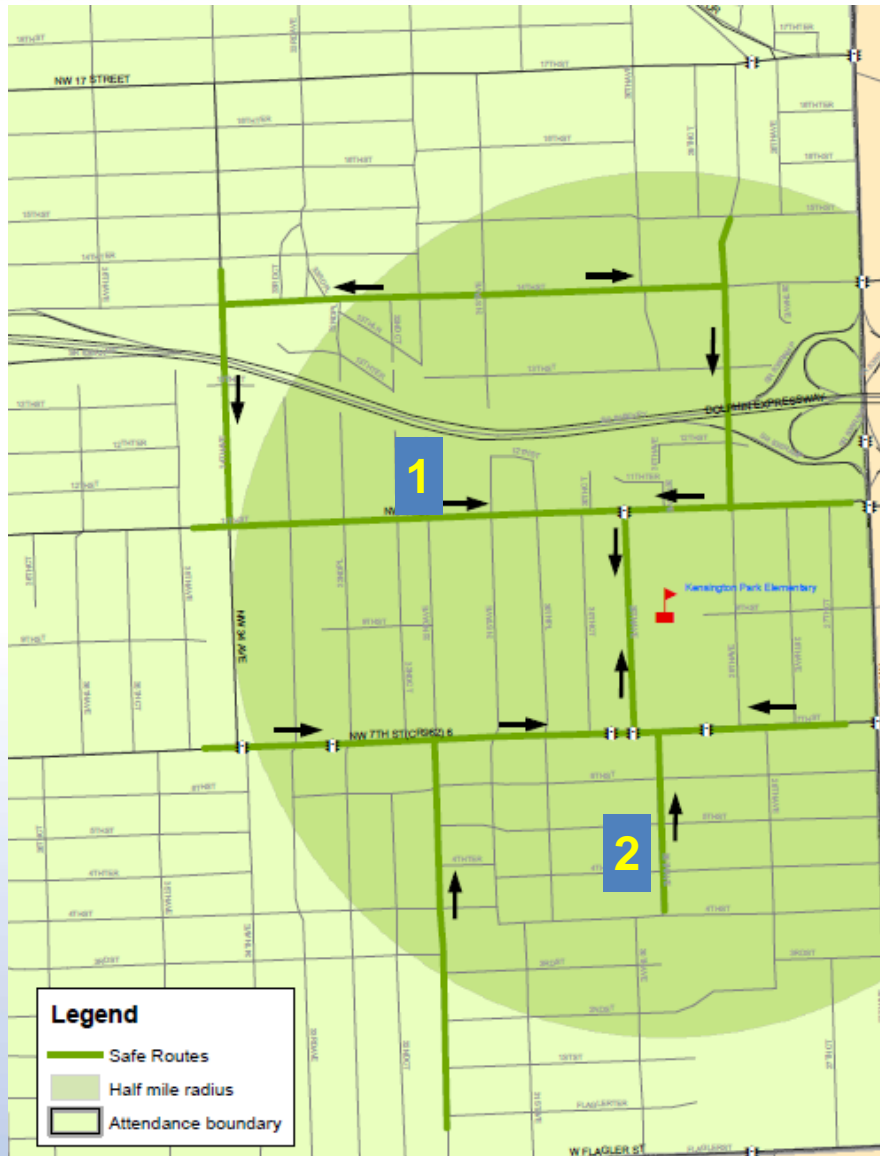


Kensington Park Elementary

- Typical improvements
 - Sidewalks, crosswalks, and signage
 - School zone flashers
- Approximate cost - \$135,000*

*Includes contingency, mobilization, maintenance of traffic, preliminary engineering, and construction engineering inspection costs.



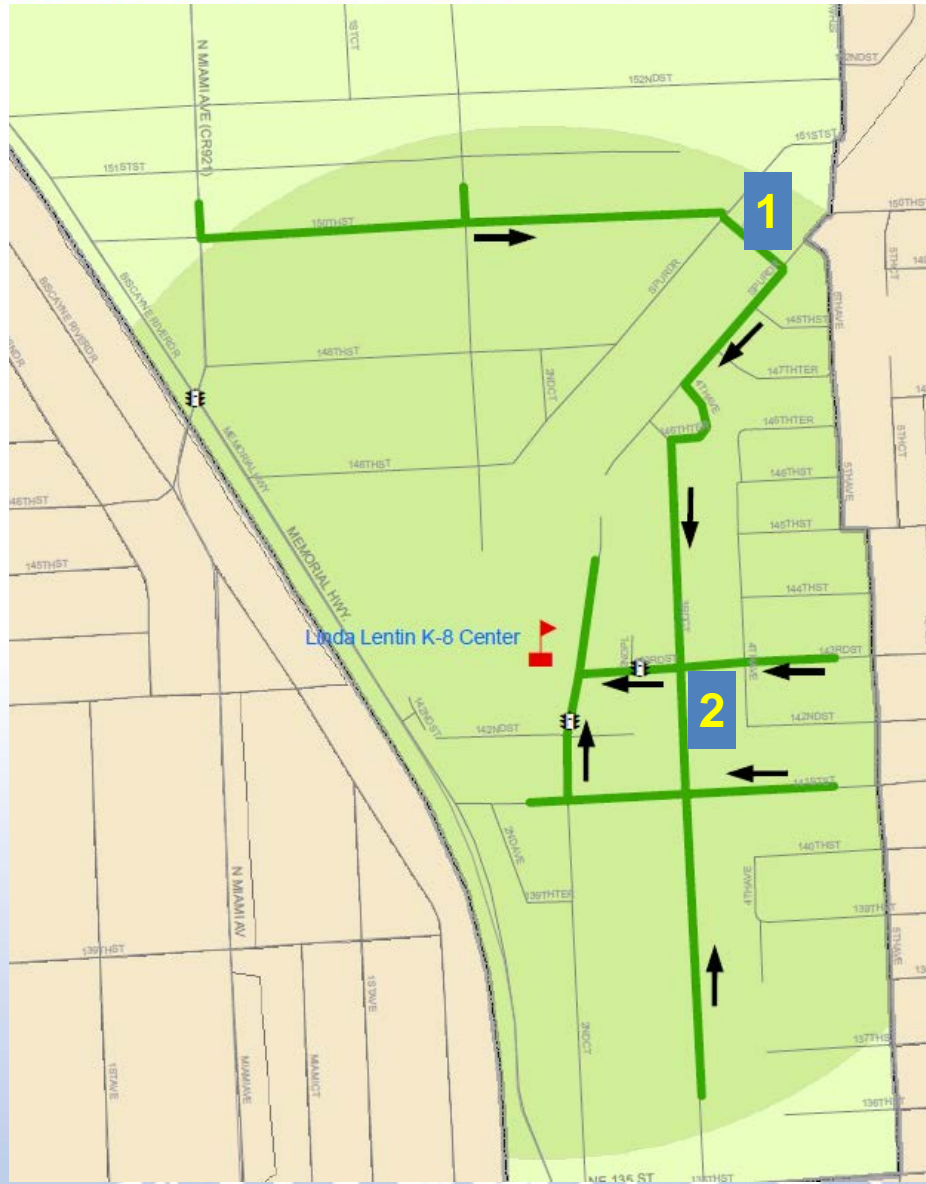


Linda Lentin K-8 Center

- Typical improvements
 - Sidewalks, crosswalks, and signage
- Approximate cost - \$170,000*

*Includes contingency, mobilization, maintenance of traffic, preliminary engineering, and construction engineering inspection costs.



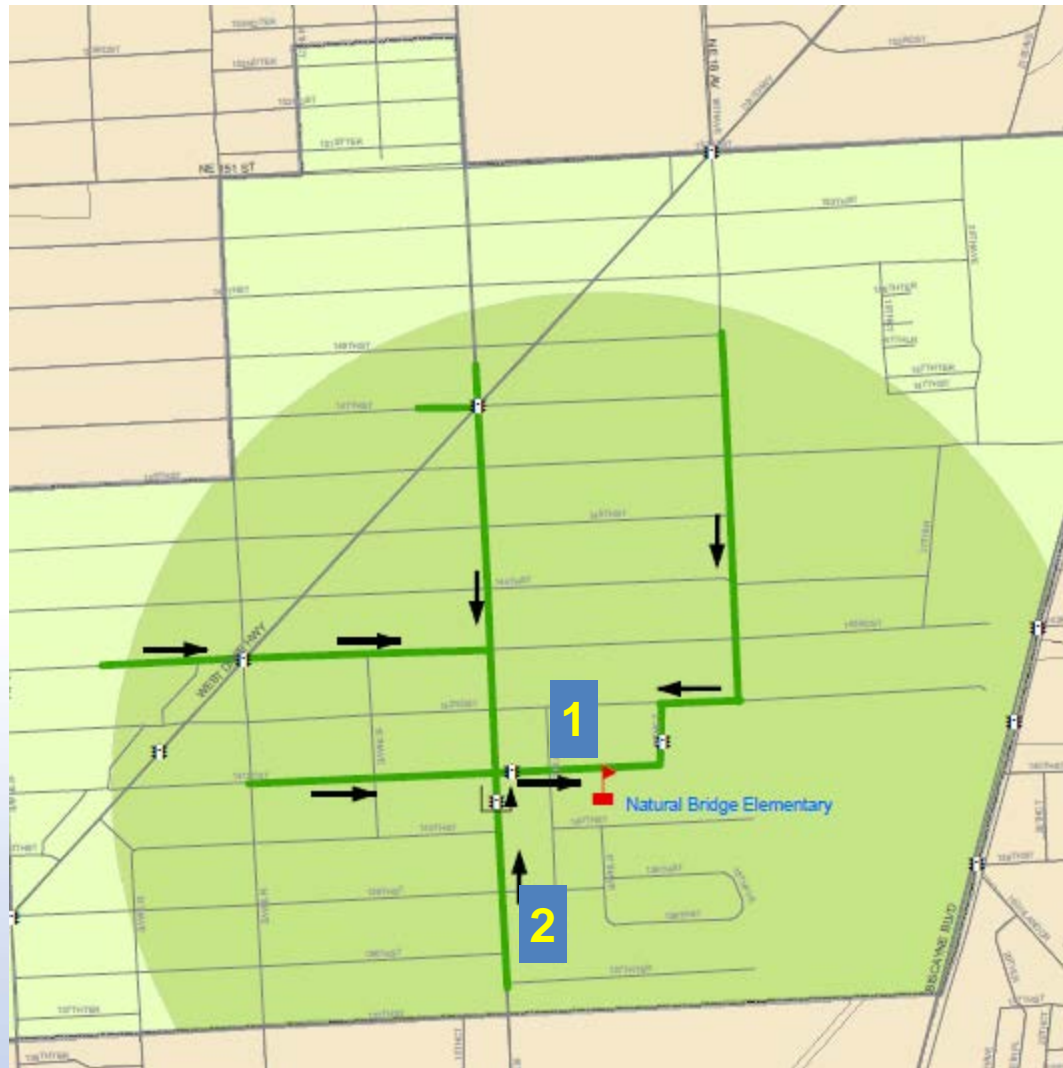


Natural Bridge Elementary

- Typical improvements
 - Sidewalks, crosswalks, and signage
 - School zone flashers, speed feedback signs, and rectangular rapid flashing beacons
 - Remove pedestrian signal on NE 16 Avenue
- Approximate cost - \$130,000*

*Includes contingency, mobilization, maintenance of traffic, preliminary engineering, and construction engineering inspection costs.



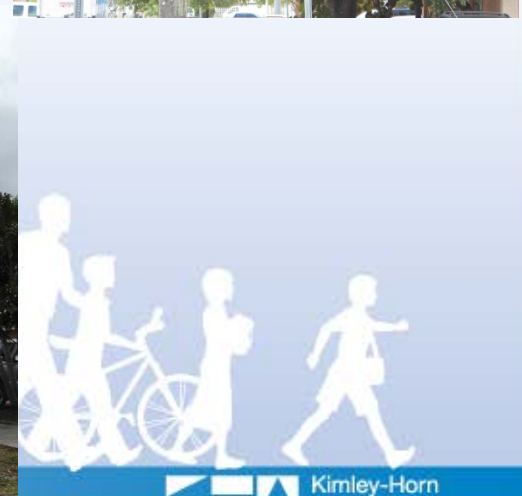


North Hialeah Elementary

- Typical improvements
 - Sidewalks, crosswalks, and signage
 - School zone flashers
 - Rectangular rapid flashing beacons (Enhancer)
- Approximate cost - \$120,000*

*Includes contingency, mobilization, maintenance of traffic, preliminary engineering, and construction engineering inspection costs.

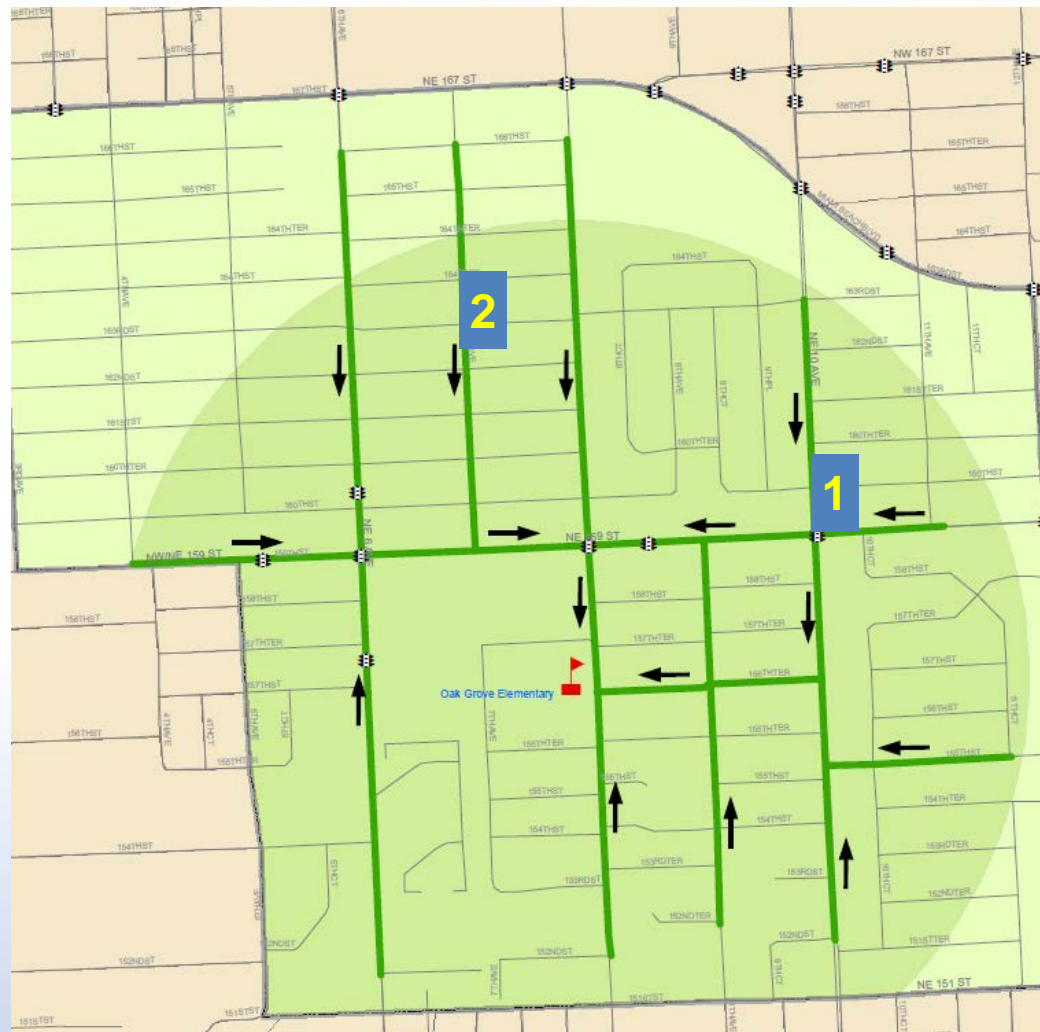




- Typical improvements
 - Sidewalks, crosswalks, and signage
 - School zone flashers and speed feedback signs
 - Traffic signal upgrades
- Approximate cost - \$200,000*

*Includes contingency, mobilization, maintenance of traffic, preliminary engineering, and construction engineering inspection costs.





Phillis Wheatley Elementary

- Typical improvements
 - Sidewalks, crosswalks, and signage
 - School zone flashers and speed feedback signs
- Approximate cost - \$125,000*

*Includes contingency, mobilization, maintenance of traffic, preliminary engineering, and construction engineering inspection costs.





- Typical improvements
 - Sidewalks, crosswalks, and signage
 - Countdown pedestrian signals
- Approximate cost - \$75,000*

*Includes contingency, mobilization, maintenance of traffic, preliminary engineering, and construction engineering inspection costs.





- Typical improvements
 - Sidewalks, crosswalks, and signage
 - Countdown pedestrian signals
- Approximate cost - \$120,000*

*Includes contingency, mobilization, maintenance of traffic, preliminary engineering, and construction engineering inspection costs.

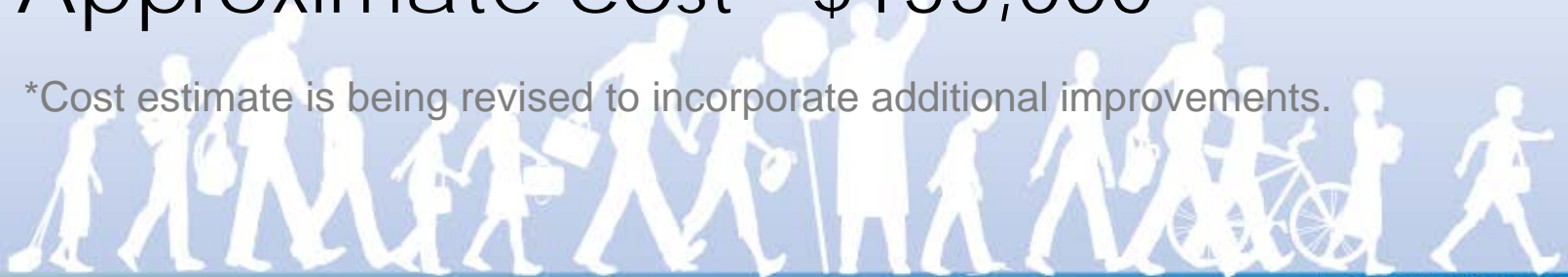


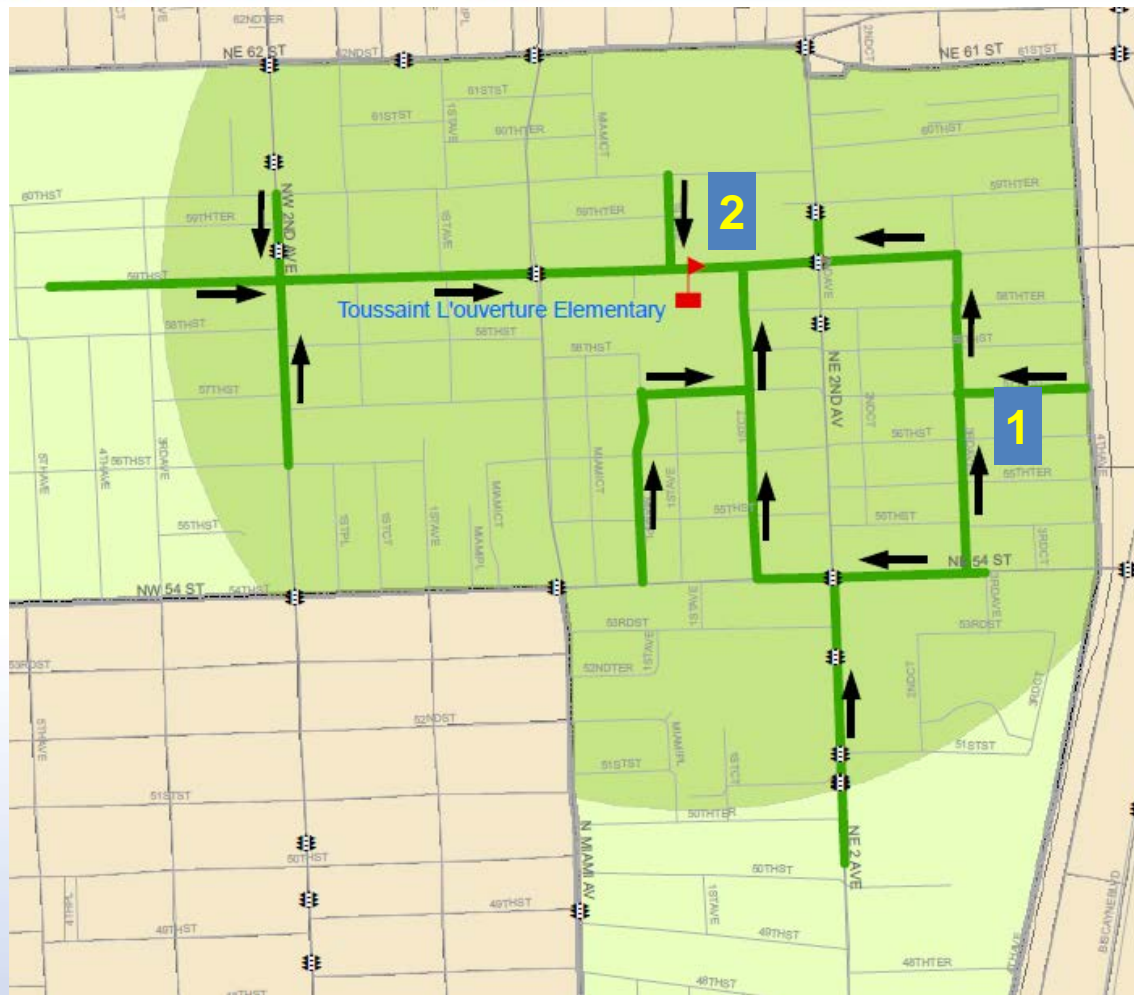


Toussaint L'ouverture Elementary

- Typical improvements
 - Sidewalks, crosswalks, and signage
 - Rectangular rapid flashing beacons (enhancer)
 - Countdown pedestrian signals
- Approximate cost - \$155,000*

*Cost estimate is being revised to incorporate additional improvements.





- Developed per FDOT'S SRTS guidelines
- Coordinated with MDC PWD and School Board to prepare applications
- Total funding request for 10 schools is approximately \$1.4 million
- Selected projects are expected to be funded during FY2017 subject to availability of federal SRTS funds

