

MPO RESOLUTION #10-15

RESOLUTION APPROVING AMENDMENTS TO THE FISCAL YEARS 2015 AND 2016 UNIFIED PLANNING WORK PROGRAM TO DELETE FIVE STUDIES FROM FISCAL YEAR 2015 OF THE PROGRAM AND TO ASSIGN SEVEN NEW STUDIES TO TASK 5.2 “CALL FOR IDEAS” IN FISCAL YEAR 2016

WHEREAS, the Interlocal Agreement creating and establishing the Metropolitan Planning Organization (MPO) for the Miami Urbanized Area requires that the MPO provide a structure to evaluate the adequacy of the transportation planning and programming process; and

WHEREAS, the Transportation Planning Council (TPC) has been established and charged with the responsibility and duty of fulfilling the aforementioned functions; and

WHEREAS, the TPC has reviewed the amendment to the FYs 2015 and 2016 Unified Planning Work Program (UPWP), made a part hereof, and finds it consistent with the goals and objectives of the Transportation Plan for the Miami Urbanized Area,

NOW, THEREFORE, BE IT RESOLVED BY THE GOVERNING BOARD OF THE METROPOLITAN PLANNING ORGANIZATION FOR THE MIAMI URBANIZED AREA, that the amendments to the Fiscal Years 2015 and 2016 Unified Planning Work Program to delete five studies from fiscal year 2015 of the Program and to assign seven new studies to Task 5.2 “Call for Ideas” in fiscal year 2016 are hereby approved.

The adoption of the foregoing resolution was moved by Vice Chairman Francis Suarez. The motion was seconded by Board Member Rebeca Sosa, and upon being put to a vote, the vote was as follows:

Chairman Jean Monestime-Aye
Vice Chairman Francis Suarez-Aye

Board Member Bruno A. Barreiro	-Aye	Board Member Smith Joseph	-Aye
Board Member Esteban Bovo Jr	-Aye	Board Member Philip Levine	-Aye
Board Member Jose “Pepe” Diaz	-Absent	Board Member Daniella Levine Cava	-Aye
Board Member Audrey M. Edmonson	-Aye	Board Member Dennis C. Moss	-Aye
Board Member Maurice Ferre	-Aye	Board Member Jeff Porter	-Aye
Board Member Oliver G. Gilbert, III	-Aye	Board Member Marc D. Sarnoff	-Absent
Board Member Perla Tabares Hantman	-Aye	Board Member Rebeca Sosa	-Aye
Board Member Carlos Hernandez	-Absent	Board Member Javier D. Souto	-Aye
Board Member Sally A. Heyman	-Absent	Board Member Xavier L. Suarez	-Aye
Board Member Barbara J. Jordan	-Absent	Board Member Juan C. Zapata	-Aye

The Chairperson thereupon declared the resolution duly passed and approved this 21st day of May, 2015.

METROPOLITAN PLANNING ORGANIZATION

By Zainab Salim
 Zainab Salim, Clerk
 Miami-Dade MPO



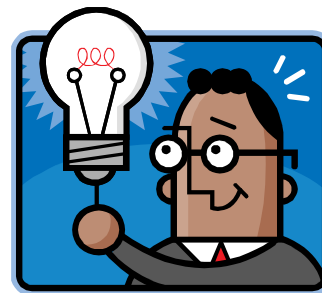
ELEMENT 5: SPECIAL PROJECT PLANNING

TASK NUMBER AND TITLE:

5.2 CALL FOR IDEAS

PURPOSE:

To solicit transportation planning ideas from the general public and other agencies that can lead to effective solutions to deal with traffic congestion in Miami-Dade County for the FY 2015 and 2016 program.



PREVIOUS WORK:

In the 2nd year of prior document (FYs 2013 and 2014 UPWP), the following studies were incorporated under this Task:

- Countywide Bus Access and Transfer Facility Assessment (carryover \$30,000 in PL funds to complete this study during FY 2015)
- Metromover System Expansion (to be completed within FY 2014 fiscal period)
- Bikeway Connection Plan (to be completed within FY 2014 fiscal period)
- Origin-Destination Surveys for Local Bus Service – South Garage (to be completed within FY 2014 fiscal period)
- Bicycle/Pedestrian Traffic Count Program (to be completed within FY 2014 fiscal period)
- Online Walk to School Route Planner – Phase II (this is a two-year commitment, with the second year to be completed during FY 2015)

METHODOLOGY:

- During the development of this document, the below ideas were recommended by the UPWP Development Committee for award during the FY 2015 (first) year of this document.
 - Countermeasures for Pedestrian and Bicycle High Crash Locations (Task 2.5)
 - Implementation Plan for EBS along Kendall Corridor (Task 5.8)
 - Parking Technology Innovations Study (Task 5.9)
 - Impact of Port Tunnel on Downtown Miami Transportation Network (Task 5.10)
 - Bus Only Lanes in Downtown Miami (Task 5.11)
 - Viability of the Conversion of Homestead Air Reserve Base (HARB) to a Joint Civilian /Military (Joint Use) Airport (Task 5.12)
 - Snapper Creek Segment “B” Master Plan (Task 5.13)
 - Regional Bicycle Route Planner (Task 5.14)
- Develop the new “Call for Ideas” brochure for FY 2016.
- Solicit the general public and other agencies through the distribution of the “Call for Ideas”.
- Shortlist ideas submitted which are applicable and feasible for transportation planning efforts.

FYs 2015 and 2016 UNIFIED PLANNING WORK PROGRAM

ELEMENT 5: SPECIAL PROJECT PLANNING

- Recommend studies which should be awarded funds for the FY 2016 program to the TPC and ultimately the MPO Governing Board.

END PRODUCTS:

- Countywide Bus Access and Transfer Facility Assessment
- Online Walk to School Planner – Phase II
- Bikeway Connection Plan
- FY 2016 studies to be adopted by the Board will be incorporated into the second fiscal year of this document under this work element.

#	FY 2016 NEW STUDIES TITLE AND DESCRIPTION	Amount
1	<p>Bike Friendly Miami-Dade Plan To prepare a “Bike-Friendly Community” plan and application for Miami-Dade County to the League of American Bicyclists with supporting data collection, analysis, policy review, agency coordination, public involvement and recommendations. The project will also facilitate additional “bike-friendly” applications for other local governments, universities and businesses.</p>	\$130,000
2	<p>Federal Planning Emphasis Areas for Miami-Dade County Conduct a comprehensive analysis of accessibility and connectivity within the Miami-Dade County network. Development of accessibility performance measures requires analytical tools to relate land uses and the County’s transportation infrastructure. Addressing the Ladders of Opportunity emphasis area requires a robust multimodal approach to the accessibility analysis to ensure that residents, and particularly underserved residents, have adequate access to essential services. This study will address both emphasis areas and be utilized to supplement the County’s LRTP with an additional planning resource to improve the connectivity, accessibility, and livability of Miami-Dade County for both residents and visitors.</p>	\$85,000
3	<p>Optimizing Transit Revenue and Capacity Limited revenue and funding options have resulted in a transit system that has either shrunk or has largely remained unchanged despite a substantial growth in population and mobility needs. New methods of transit fee and fare collection need to be looked at to cater to previously untapped transit markets and increase overall transit ridership. The objectives of this study is to: (1) Increase transit ridership by leveraging fixed-costs of services; (2) Use transit fare to match service supply and demand; (3) Proportionately distribute cost of services by user-type and time-of-day; (4) Leverage technology to make fare collection system more nimble and demand-responsive; and, (5) Tap into new revenue sources. The study will focus on revenue neutral and revenue generating scenarios while trying to capture previously untapped transit markets.</p>	\$145,000
4	<p>Evaluating Feasibility of Superarterials The urbanized Miami-Dade area has fewer highway lane miles than many comparable urban areas in the country. Construction of new limited-access facilities, given the density and impacts, is becoming less feasible or prohibitively expensive. In an era of where mobility needs outstrip transportation funding, there is a need to reassess established arterial streets to increase capacity and optimize</p>	\$130,000

FYs 2015 and 2016 UNIFIED PLANNING WORK PROGRAM

ELEMENT 5: SPECIAL PROJECT PLANNING

	operations. A few such methods include prioritizing vehicle or user types or better controlling demand. Achievement of the stated study objective will potentially result in a capacity increase and congestion reduction while minimizing adverse environmental impacts typically associated with improvements of such type.	
5	Safe Routes to School 2015 To develop “Safe Routes to School” plans for at least 10 selected elementary schools that identify “safe routes” infrastructure improvements, cost estimates and a walking map for each, and to prepare FDOT funding applications for selected schools.	\$70,000
6	Evaluation of Multimodal Options in South Miami Dade To identify and evaluate potential roadway, transit, and non-motorized improvements in the South Miami-Dade area, defined as the area east of Krome Avenue between SW 88 th Street and SW 344 th Street, such that they can be the identified improvements can be programmed for implementation.	\$140,000
7	Visualization Tool of Travel Flow The overarching goal is to make travel flow information available to the residents, professional community and elected officials via the internet. The approach to be employed is by automating the process of extracting travel-origin destination information from the U.S. Census and the Long Range Transportation Plan (LRTP) and by providing a graphic visualization end-product that facilitates user the analysis of person travel movement information. To provide the needed functionality, a web-enabled application is to be developed that hosts a geo-database that can tie together the geographic and non-geographic information at micro-analysis zone (MAZ). In essence, data in various forms is inputted into a centralized geo-database that resides at the MPO. The geo-database will allow user-defined and pre-defined queries that answer the most typical questions posed by the public and public officials. Furthermore, the open architecture and off-the-shelf software to be used for the application to be developed, is to allow a number of queries to be executed. Output and/or the result of such queries can be formatted into both tabular and geographic (map) forms.	\$165,000
Total		\$865,000

PROJECT MANAGER:

Oscar Camejo, MPO

PARTICIPATING AGENCY:

Miami-Dade Metropolitan Planning Organization

WORK SCHEDULE:

- Start Date: November, 2014
- End Date: September 2016 (Studies may be completed beyond this date for FY 2016 new studies)

FYs 2015 and 2016 UNIFIED PLANNING WORK PROGRAM

ELEMENT 5: SPECIAL PROJECT PLANNING

FUNDING: The first year funding will be for the solicitation on new ideas to be incorporated into the second year of the document. The new transportation planning studies will be funded during the second year of this program, thus the disparity of funds in the below tables.

Year 1 – FY 2014/15

AGENCY	FHWA PL	PL Local Match	FTA 5305	FTA Local Match	FTA State Match	FHWA STP	STP Local Match	Total
MPO	12,290	2,711	0	0	0	0	0	15,000
Cons. FY 14 Carryover	0	0	55,200	6,900	6,900	0	0	69,000
Consultant	65,544	14,456	0	0	0	0	0	80,000
Total	77,834	17,167	55,200	6,900	6,900	0	0	164,000

Year 2 – FY 2015/16*

AGENCY	FHWA PL	PL Local Match	FTA 5305	FTA Local Match	FTA State Match	FHWA STP	STP Local Match	Total
MPO	24,579	5,424	0	0	0	0	0	30,000
	57,351	12,649	12,000	1,500	1,500			85,000
Consultant	70,460	15,540	207,200	25,900	25,900	0	0	345,000
	361,311	79,689	271,200	33,900	33,900			780,000
Total	95,039	20,961	207,200	25,900	25,900	0	0	375,000
	418,662	92,338	283,200	35,400	35,400	0	0	865,000

*The PL budget for Year 2 is illustrative until approved by the Florida Legislature.

- Complete FY 2014 recommended studies:
 - Countywide Bus Access and Transfer Facility Assessment (Originally awarded in FY 2014, work effort to be completed with FY 2014 \$69,000 in Section 5305(d) funds from this task and \$31,000 in FY 2014 Section 5305 (d) funds from GPC task 5.1. Analyze and determine the adequacy and effectiveness of bus and auto access and loading/unloading areas and facilities (stops/stations and terminals) at and along existing Miami-Dade County transit routes/facilities (Metrorail, Metromover, Tri-Trail and Metrobus) and develop a comprehensive, short-term and long-term Transit System Bus Access and Transfer Facility Master Plan for implementing an integrated network of transit improvements. The plan will be done for current conditions, for the next 5-10 years and for the next 10-20 year time frames and develop a comprehensive list of prioritized recommendations.
 - Online Walk to School Route Planner – Phase II (original commitment of two-year effort began in FY 2014, second year to be funded under this task using \$50,000 in FY 2015 PL funds). This is the second year of a two-year project awarded through the Call for Ideas program to develop an on-line Safe Routes to School mapping system for 50 Elementary schools. Parents will be able to use the system to identify a walking route from home to the school in their district based on the location of sidewalks, marked crosswalks, traffic signals and crossing guards.
 - Bikeway Connection Plan (funded in FY 2014 with \$20,000 in STP and \$30,000 in PL funds) Identify projects and strategies to improve the connectivity of the existing bikeway network to useful destinations and other non-motorized facilities.