

MEMORANDUM

| | |
|--|--|
| To: David Henderson Miami-Dade County Metropolitan Planning Organization (MPO) | Date: May 6, 2016 |
| From: Stewart Robertson, P.E. Kimley-Horn and Assoc (KH) | Subject: Community Information Workshop |
| Project: Snapper Creek Trail Segment B Master Plan | Job No.: 040829043 |

The Community Information Workshop to present the project for the Snapper Creek Trail Segment B Master Plan was held on Wednesday, April 27, 2016 at South Miami City Hall (6130 SW 72nd Street) from 4:00 PM to 7:00 PM. The Community Information Workshop was held as an Open House format and a formal presentation was given approximately halfway through the Workshop to provide the public with a project overview and context. The purpose of the Open House was to present the project and receive input about non-motorized mobility needs, opportunities, and constraints along Snapper Creek Trail Segment B from K-Land Park (9475 SW 88th Street) to the Red Road Linear Park on the east side of SW 57th Avenue at SW 88th Street.

The workshop attracted 29 workshop attendees, of which seven are part of the Steering Committee listed below.

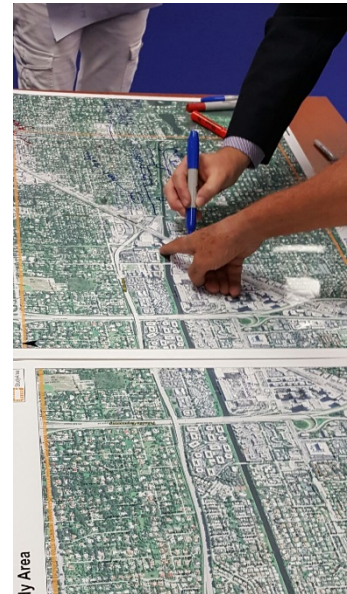
- David Henderson, Project Manager – Miami-Dade County MPO
- Napoleon Somoza – Miami-Dade Regulatory and Economic Resources (RER)
- Mark Heinicke – Miami-Dade Parks, Recreation and Open Spaces (MDPROS)
- Armando Vilaboy – South Florida Water Management District (SFWMD)
- Shari Kamali – City of South Miami
- Stewart Robertson – Kimley-Horn and Associates, Inc. (KH)
- Lisa Juan – Kimley-Horn and Associates, Inc. (KH)

This memorandum presents the notes and comments that were recorded by KH staff. Figures 1 and 2 depict the alignments that were drawn at the workshop.

Snapper Creek Trail Segment B Community Information Workshop Public Comments

- Snapper Creek Trail Segment B is a crucial part of the needed bike/walk infrastructure network especially since it's an east-west corridor. There are many existing north-south trails around the study area such as the M-Path/South Dade Trail, Red Road Linear Park, and Ludlam Trail. This trail supports the east-west connectivity between these trails.

- Some attendees were concerned about the level of announcement for public workshops.
- Investigate the placement of legal property lines/right-of-way lines to determine how much space is available within public right-of-way for the trail and which developments may have an official agreement for maintenance.
- Bicycling on the proposed on-street alignments could dissuade some riders if bicyclists are not comfortable riding on the road. Shared-use paths attract bicyclists with a wider range of skill levels, including children.
- An elevated bridge crossing or depressed tunnel crossing of the Palmetto Expressway at Snapper Creek Canal is needed if the alignment crosses the expressway at the canal.
- Add a canoe/kayak launch site south of SW 87th Street and SW 58th Avenue, just west of Dante Fascell Park.
- SW 85th Street, SW 86th Street, and SW 87th Street are low traffic roads and can be considered as attractive neighborhood greenways alignments.
- SW 84th Street has cut-through and relatively high traffic levels.
- Need to consider short trips/connections within the study area.
- Several residents who live adjacent to the north bank of the canal between SW 57th Avenue and SW 67th Avenue are concerned with the proximity of the proposed trail to residential property.
- Proximity of trail along the canal concerns include the following.
 - Garbage/Waste
 - Noise
 - Security
 - Privacy
 - Cost
 - Safety
 - Property Value Depreciation
 - Narrow Right-of-Way
- In addition to the existing facilities that were presented at the workshop, there is an existing path on SW 72nd Street/Sunset Drive from SW 87th Avenue to SW 107th Avenue that could be considered as part of an alternate alignment.
- Some attendees commented that the proposed Snapper Creek Trail Segment B brings positive impacts to the surrounding communities, connections to community health, recreation, numerous destinations, and other regional trails.
- Several attendees stated that they ride an east-west alignment that includes SW 94th Street, SW 96th Street, and SW 98th Street to go between the K-Land Park/Baptist Hospital area and Pinecrest/Old Cutler Road. SW 98th Street was stated to be busy, but considered to be a better alternative to crossing the Palmetto Expressway on SW 88th Street/Kendall Drive, which is much busier.



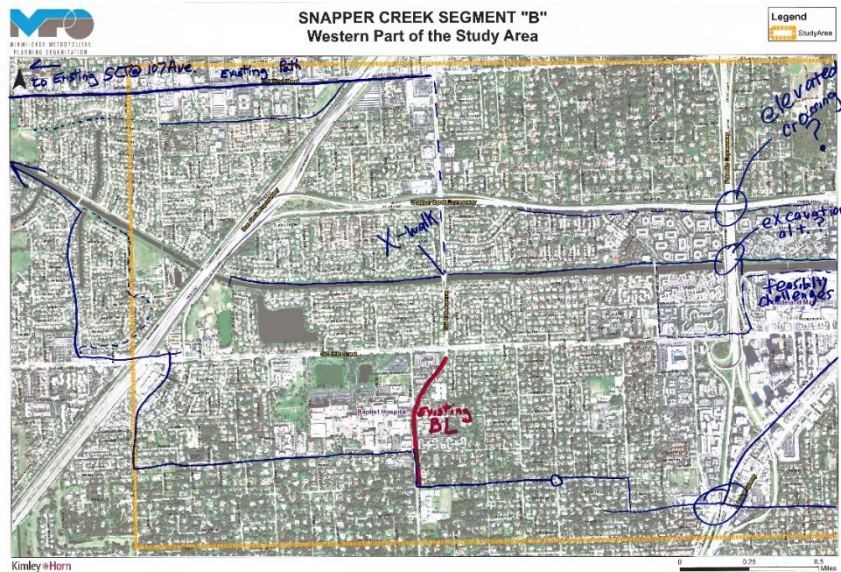


Figure 1. Western Part of the Study Area Aerial

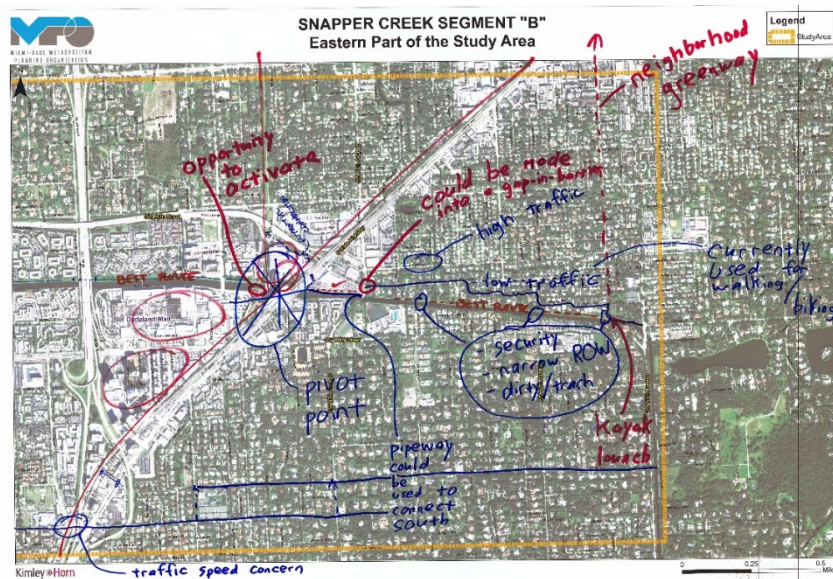


Figure 2. Eastern Part of the Study Area Aerial

Sincerely,

Stewart E. Robertson

Stewart E. Robertson, P.E.