

WORK ORDER  
#GPC V-30



MIAMI-DADE  
METROPOLITAN  
PLANNING  
ORGANIZATION

# Snapper Creek Trail

## SEGMENT "B" MASTER PLAN



Kimley»»Horn



# Snapper Creek Trail

SEGMENT B MASTER PLAN

## Public Workshop

The Miami-Dade Metropolitan Planning Organization invites area residents to attend a public workshop for the Snapper Creek Trail Segment "B" Master Plan from K-Land Park (9475 SW 88 Street) to Dante Fascell Park (8600 SW 57 Ave).

This meeting is for the public to learn about and give input on pedestrian and bicycle improvements within the study corridor. As part of the meeting, County staff will answer questions about the plan. The meeting will be held at:

South Miami City Hall  
6130 SW 72nd Street, South Miami, FL 33143

**Monday, June 27, 2016 | 4:00 to 7:00 p.m.**

*For further information, requests for language interpreters or questions prior to the meeting contact David Henderson, Miami-Dade MPO at [dhenderson@miamidadempo.org](mailto:dhenderson@miamidadempo.org).*



in conjunction with  
**Kimley»Horn**

# Tonight's Program

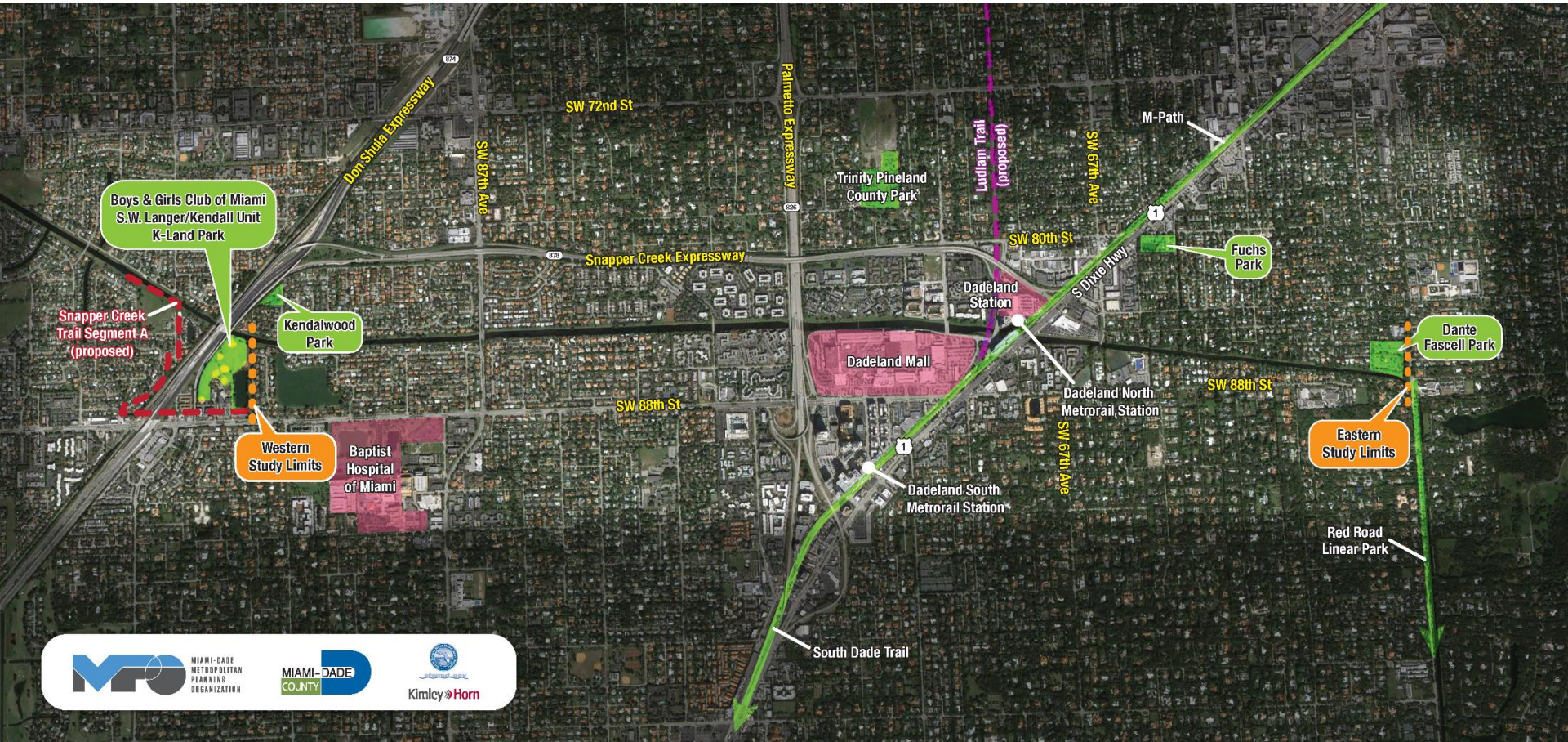
# Workshop Objectives

- Learn about the draft proposed short-term and long-term alignments
- Voice potential concerns and provide input
- Help shape future plans for the Snapper Creek Trail Segment B corridor





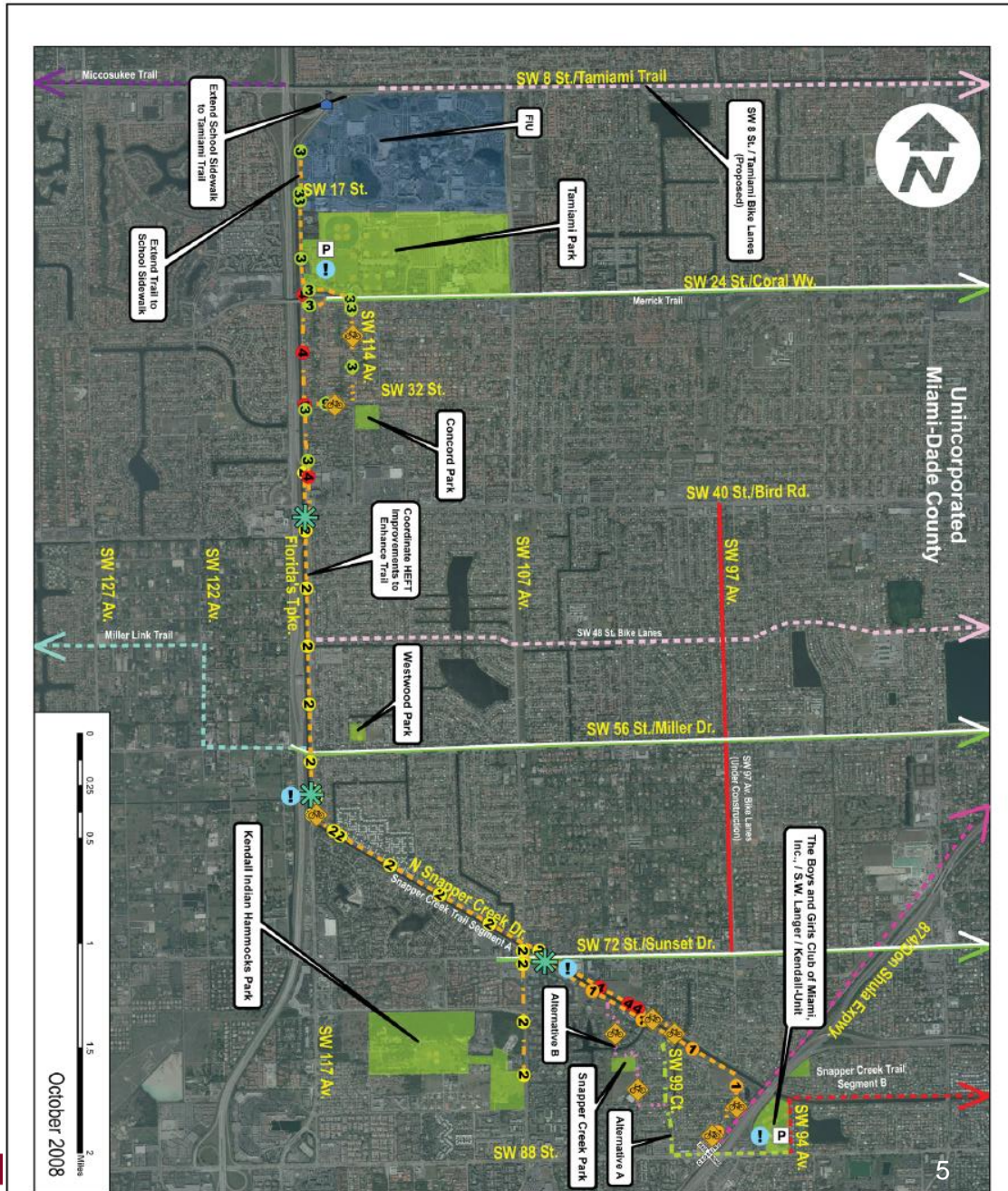
# Snapper Creek Trail Segment "B" Aerial Map





# Snapper Creek Trail Segment "A"

- Completed master plan to the north and west of the current study area











Over 100 miles of bicycle/pedestrian facilities have been built to date...





... including many canal trails





Connections to existing corridors and destinations

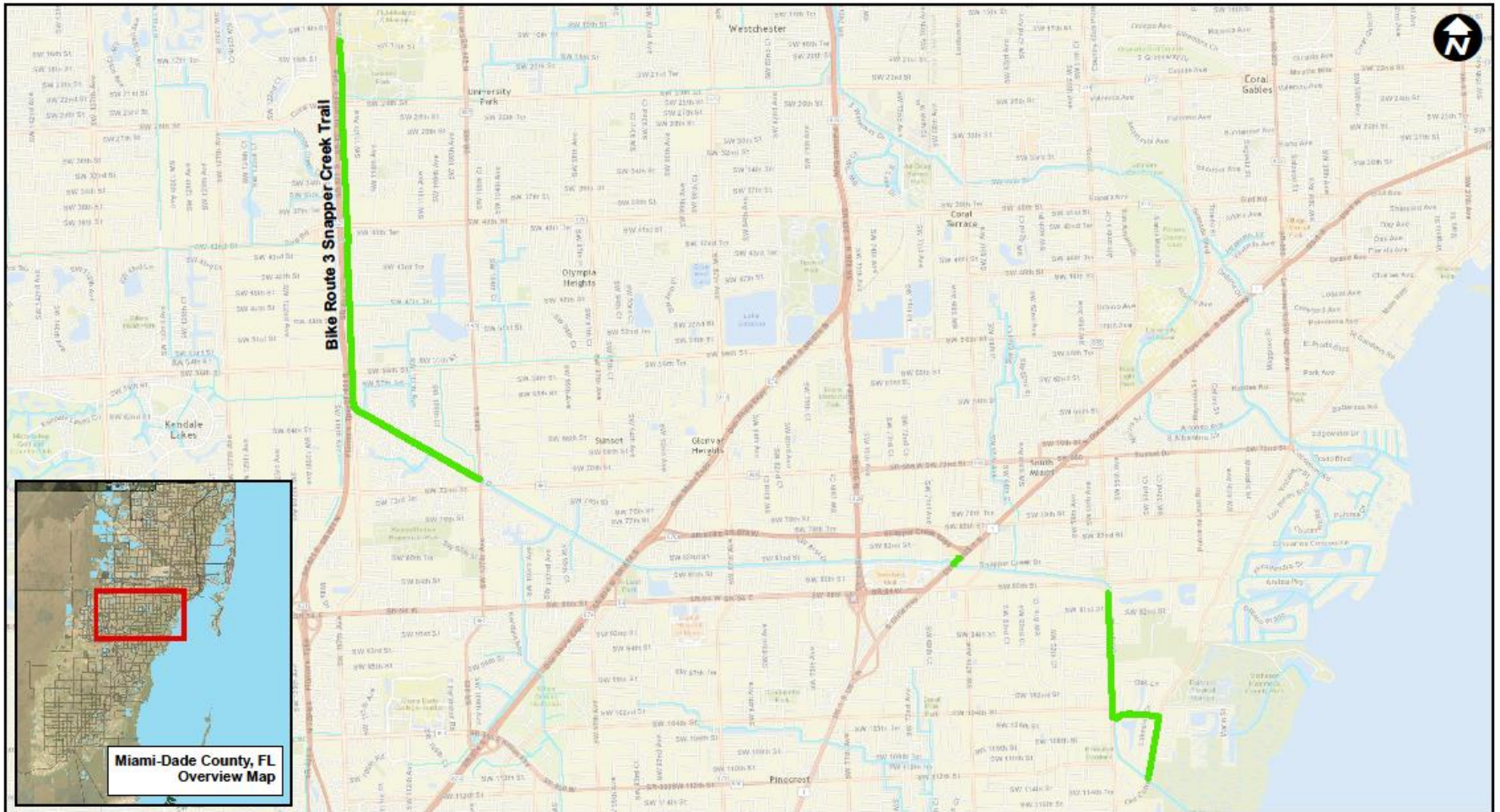


# Snapper Creek Trail

SEGMENT "B" MASTER PLAN



## Bicycle Wayfinding Study Bike Route 3 - Snapper Creek Trail



Miami-Dade County, FL  
Overview Map



# Study Objectives

- Improve facilities for bicycling and walking
- Provide effective alternatives to short auto travel
- Promote healthier lifestyles
- Improve safety





# Corridor Constraints

- Crossing Palmetto Expressway
- Canal sections where the right-of-way is narrow
- Canal sections where the right-of-way has been consumed
- Access control at street crossings
- Mid-block arterial roadway crossings
  - SW 87<sup>th</sup> Avenue / Snapper Creek Canal (C-2) intersection
  - SW 72<sup>nd</sup> Avenue / Snapper Creek Canal (C-2) intersection
  - SW 67<sup>th</sup> Avenue / Snapper Creek Canal (C-2) intersection



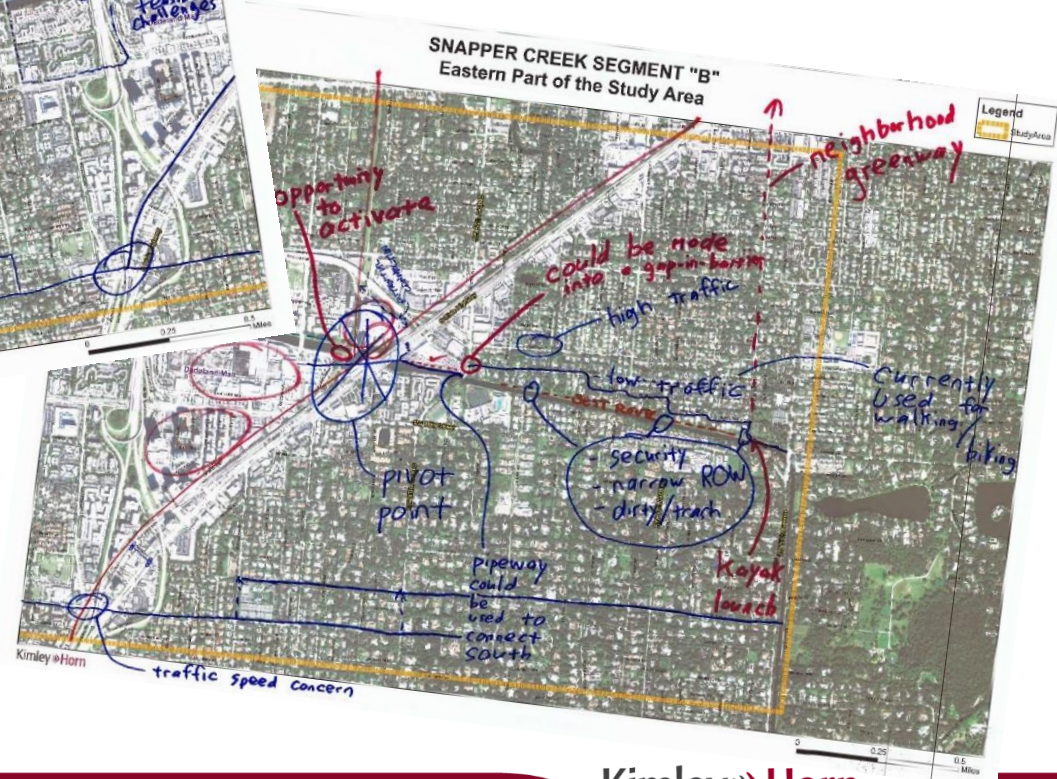
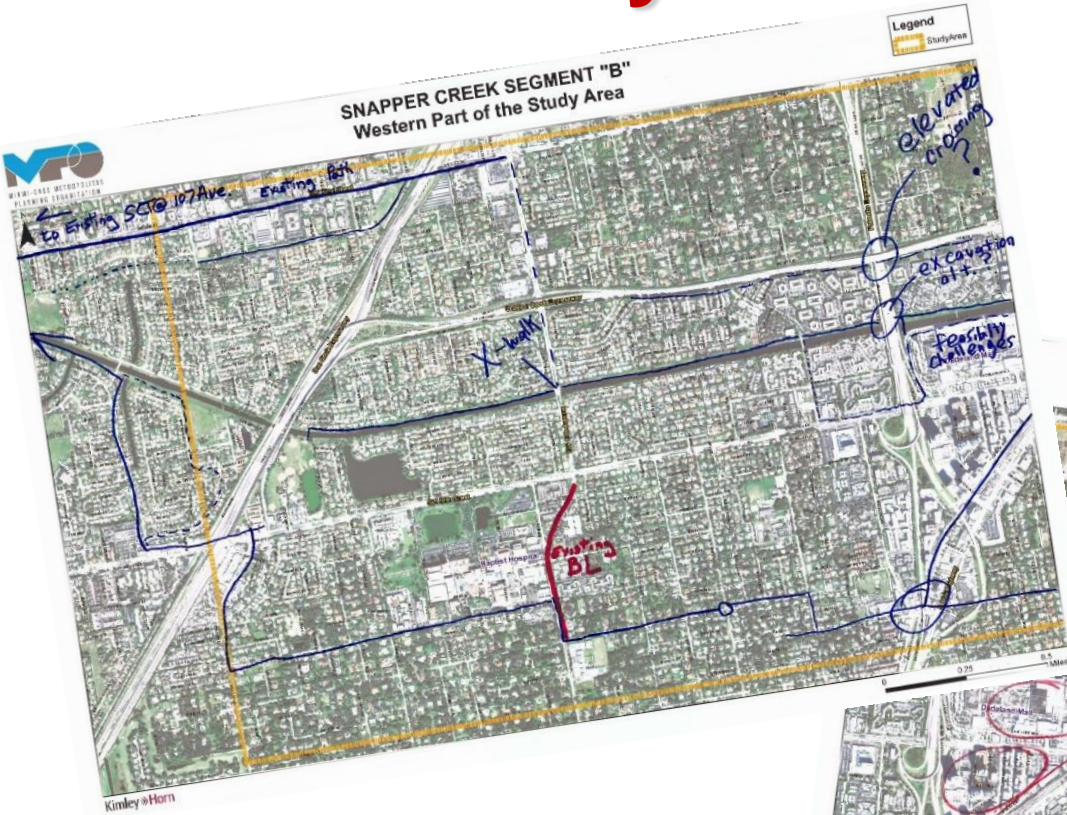
# Community Information Workshop

- Held on April 27, 2016 at South Miami City Hall
- Attracted **29 workshop** attendees
- Open house format and a formal presentation was given to provide the public with a project overview and context





# Community Information Workshop





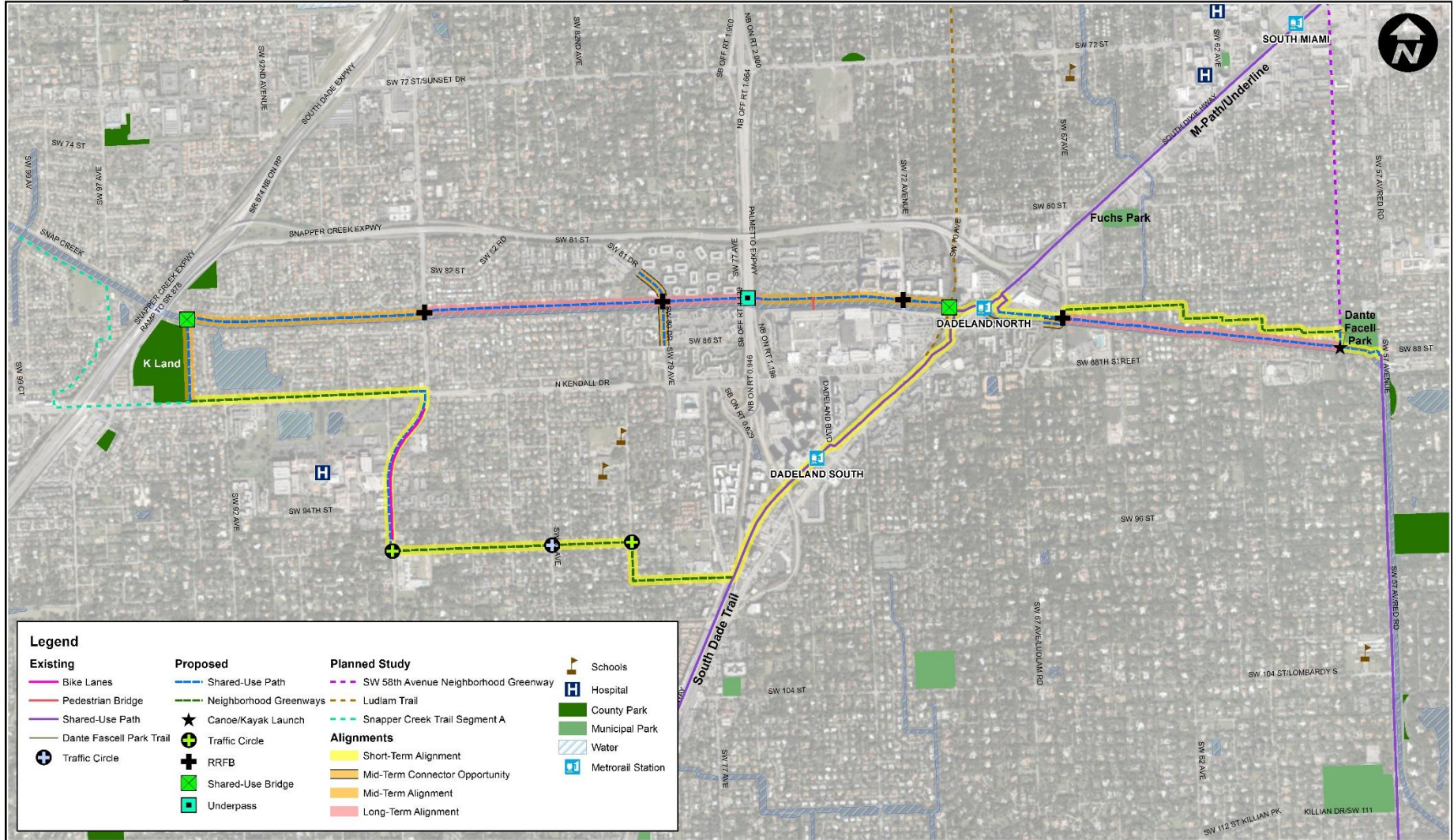
# Community Information Workshop

- Public feedback included both positive support messages and concerns from residents adjacent to the canal
- Need to consider short trips/connections within the study area as well as regional mobility
- Residents along the canals raised concerns
  - Garbage/Waste
  - Noise
  - Security
  - Privacy
  - Cost
  - Safety
  - Property Value of Depreciation
  - Narrow Right-of-Way



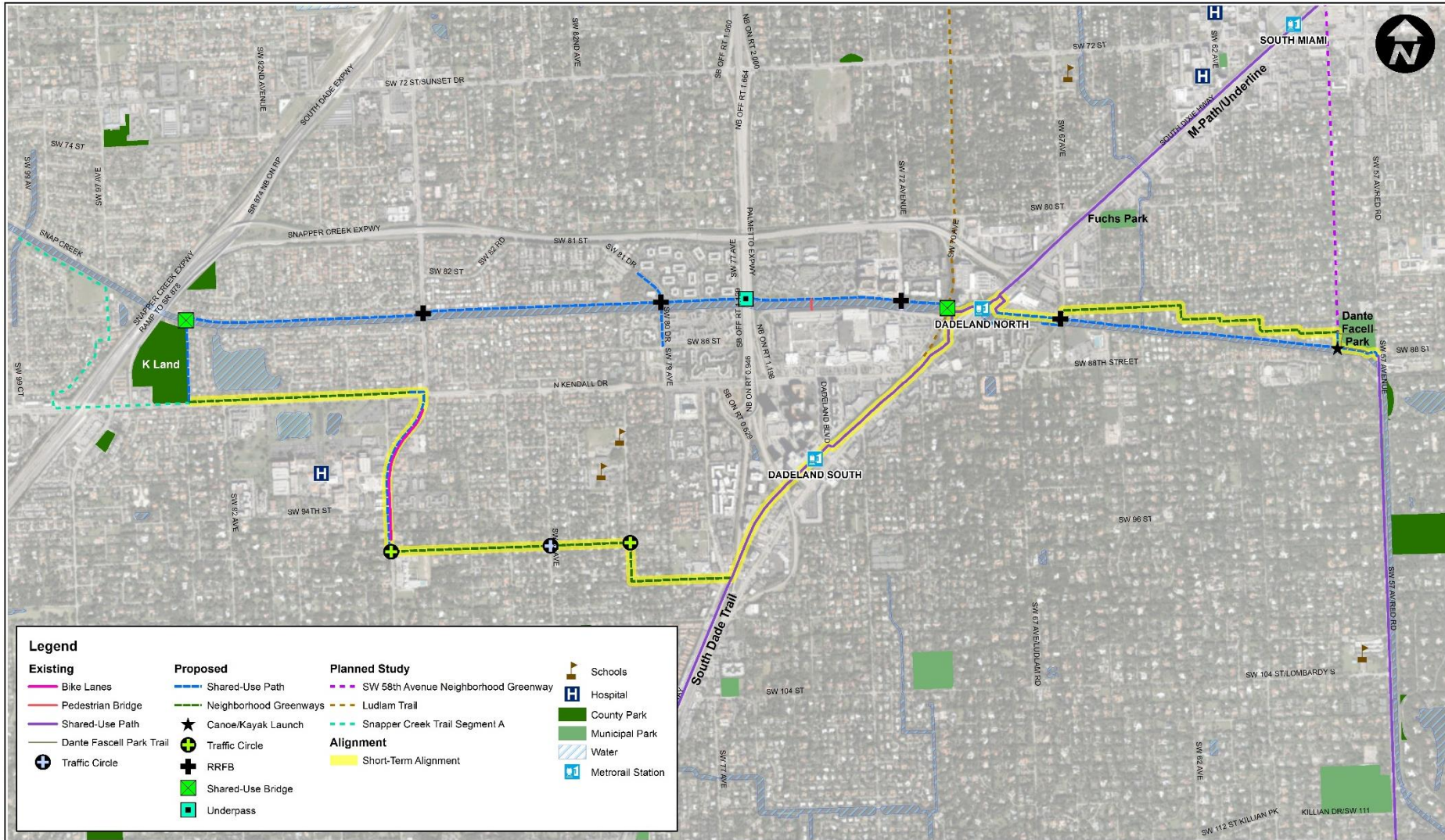


# Recommendations



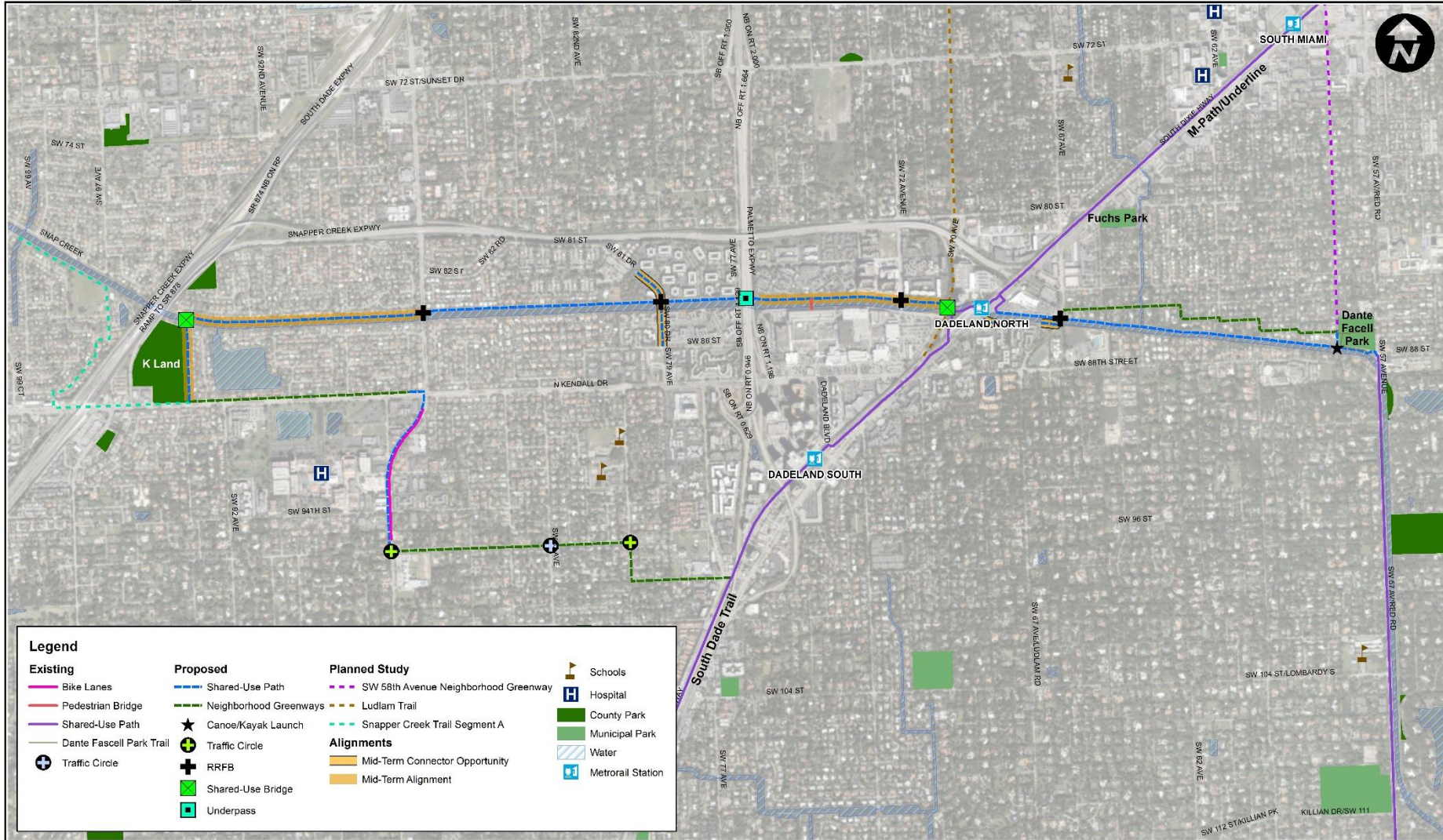


# Short-Term Alignment



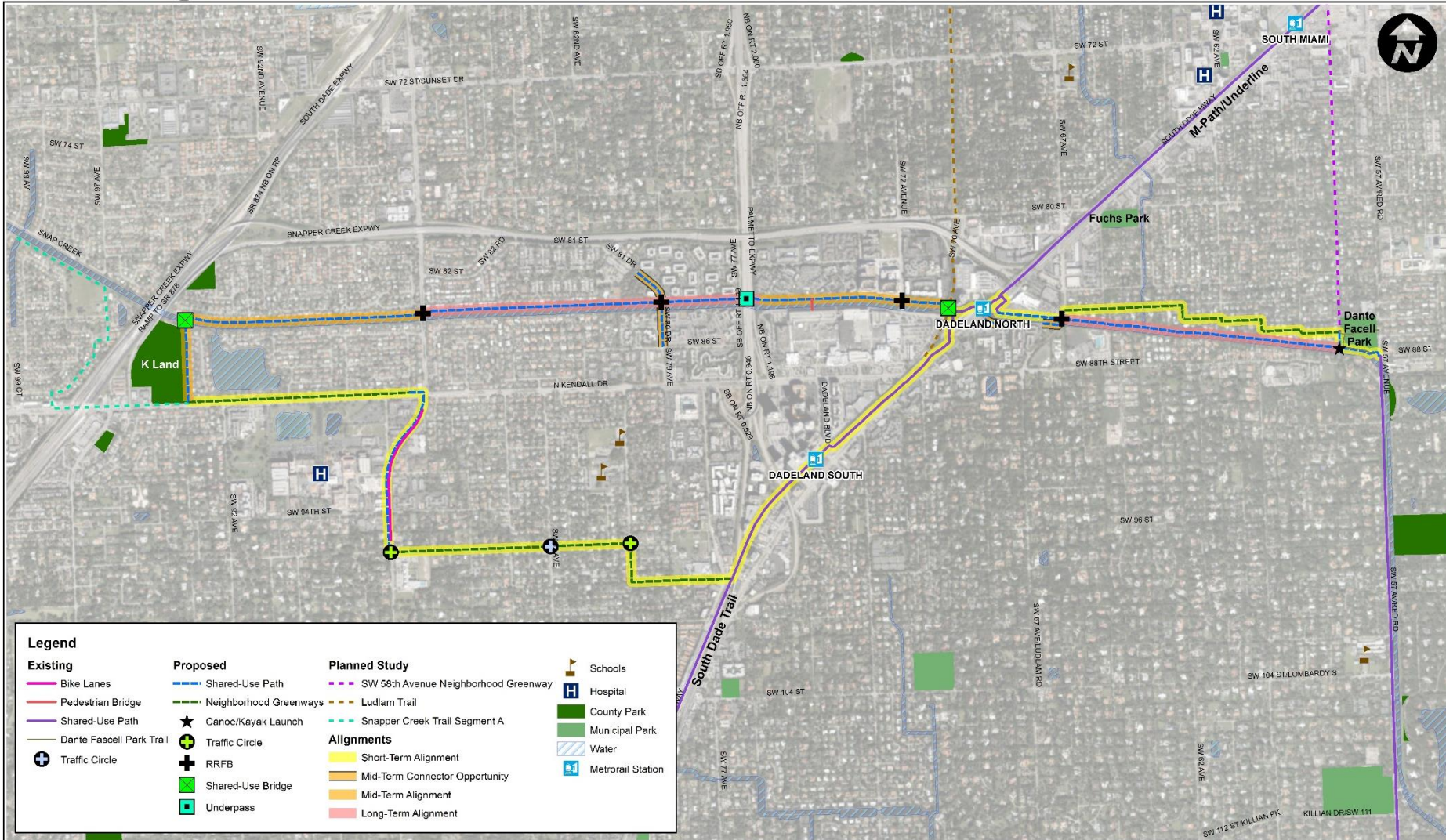


# Mid-Term Connector Opportunity/Alignment



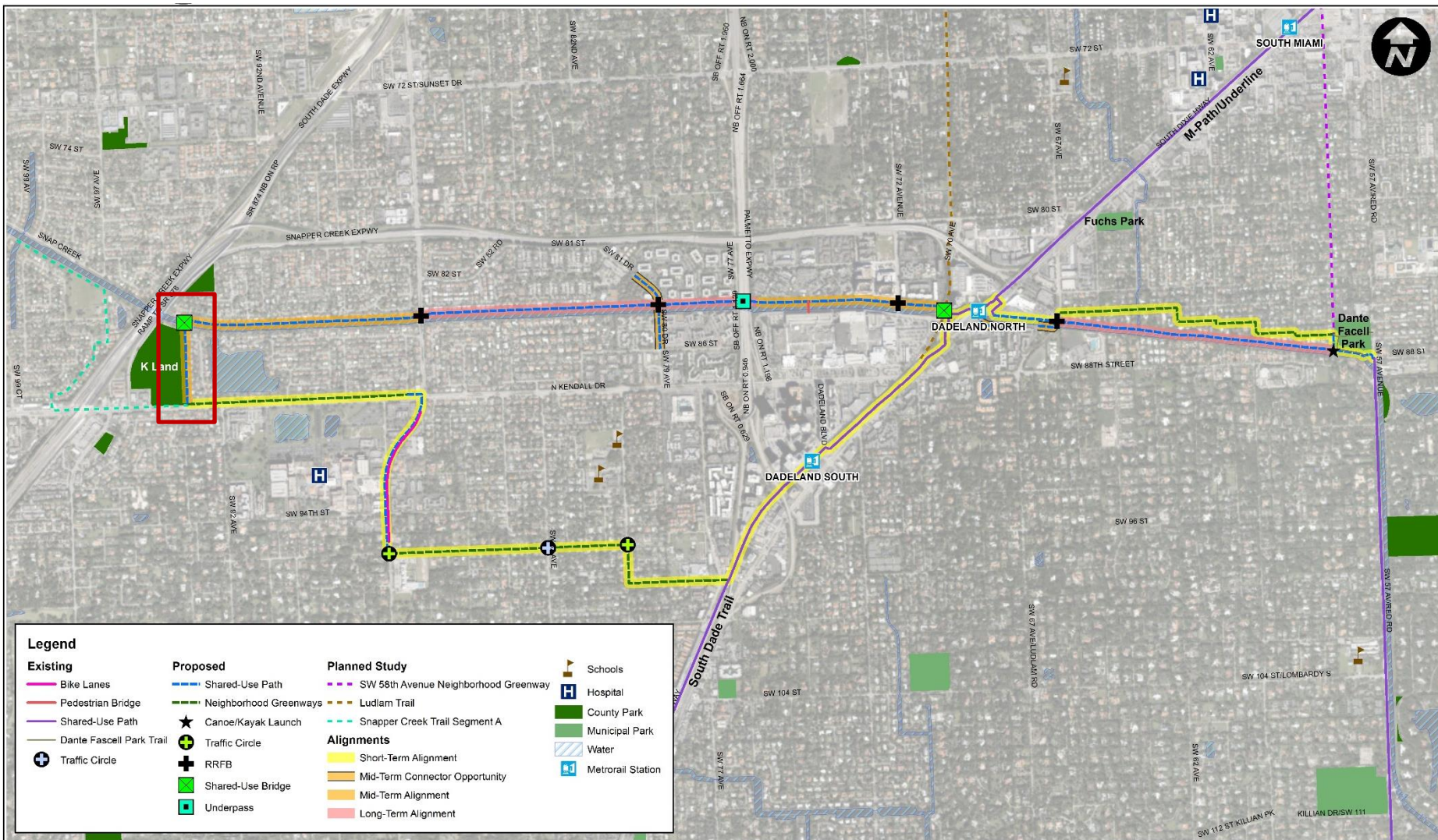


# Long-Term Alignment



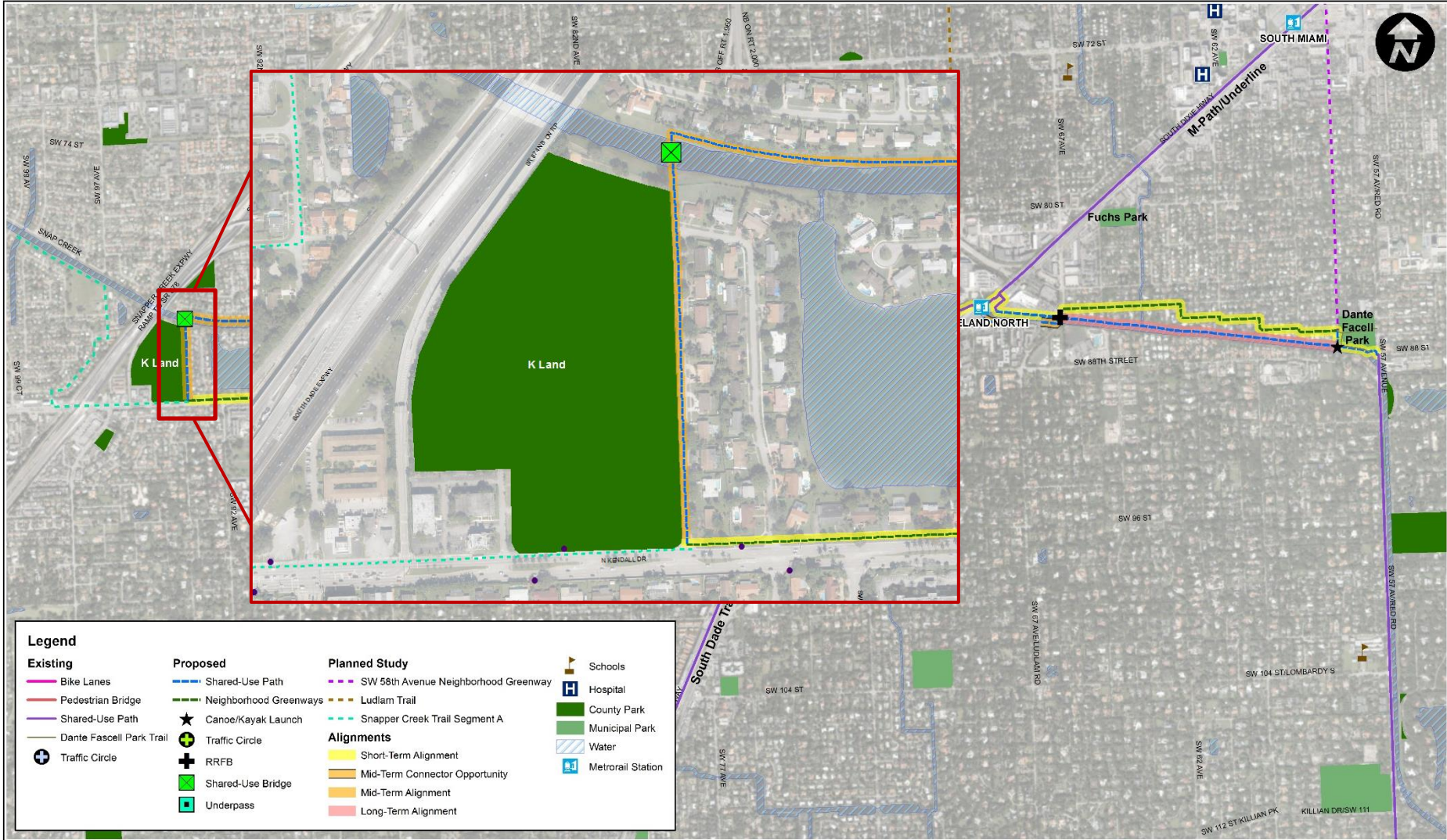


# Insets



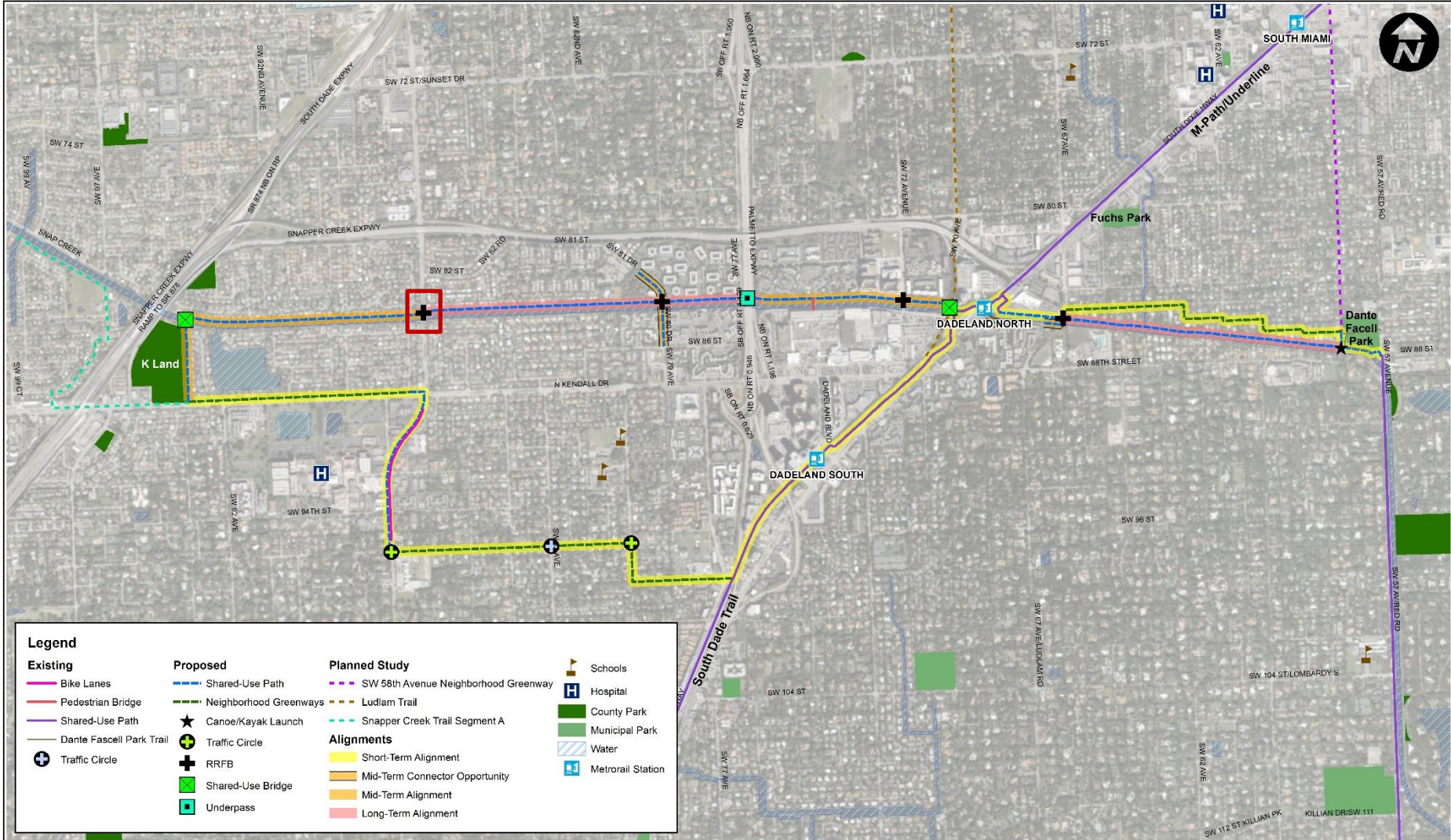


# Insets



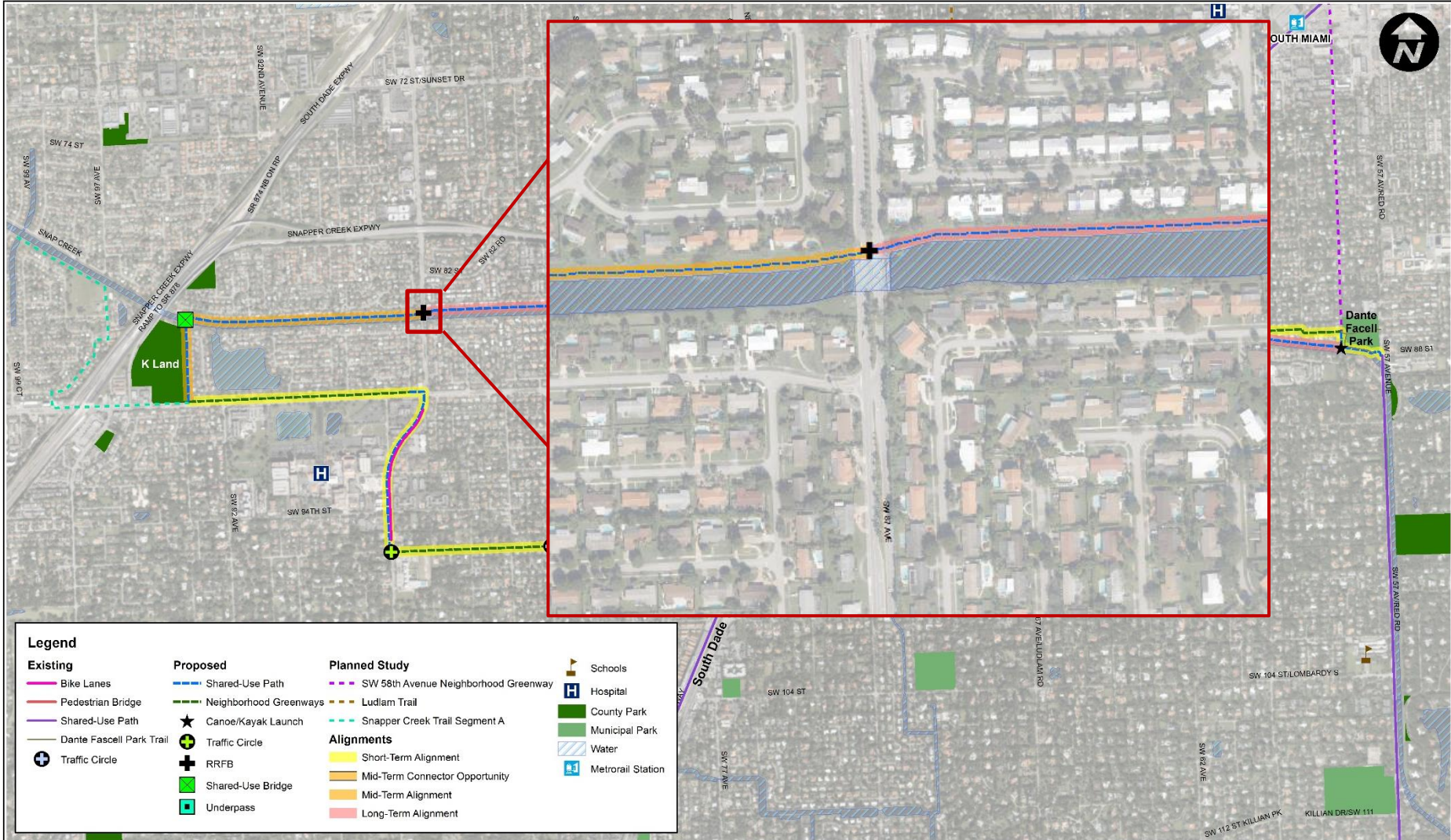


# Insets



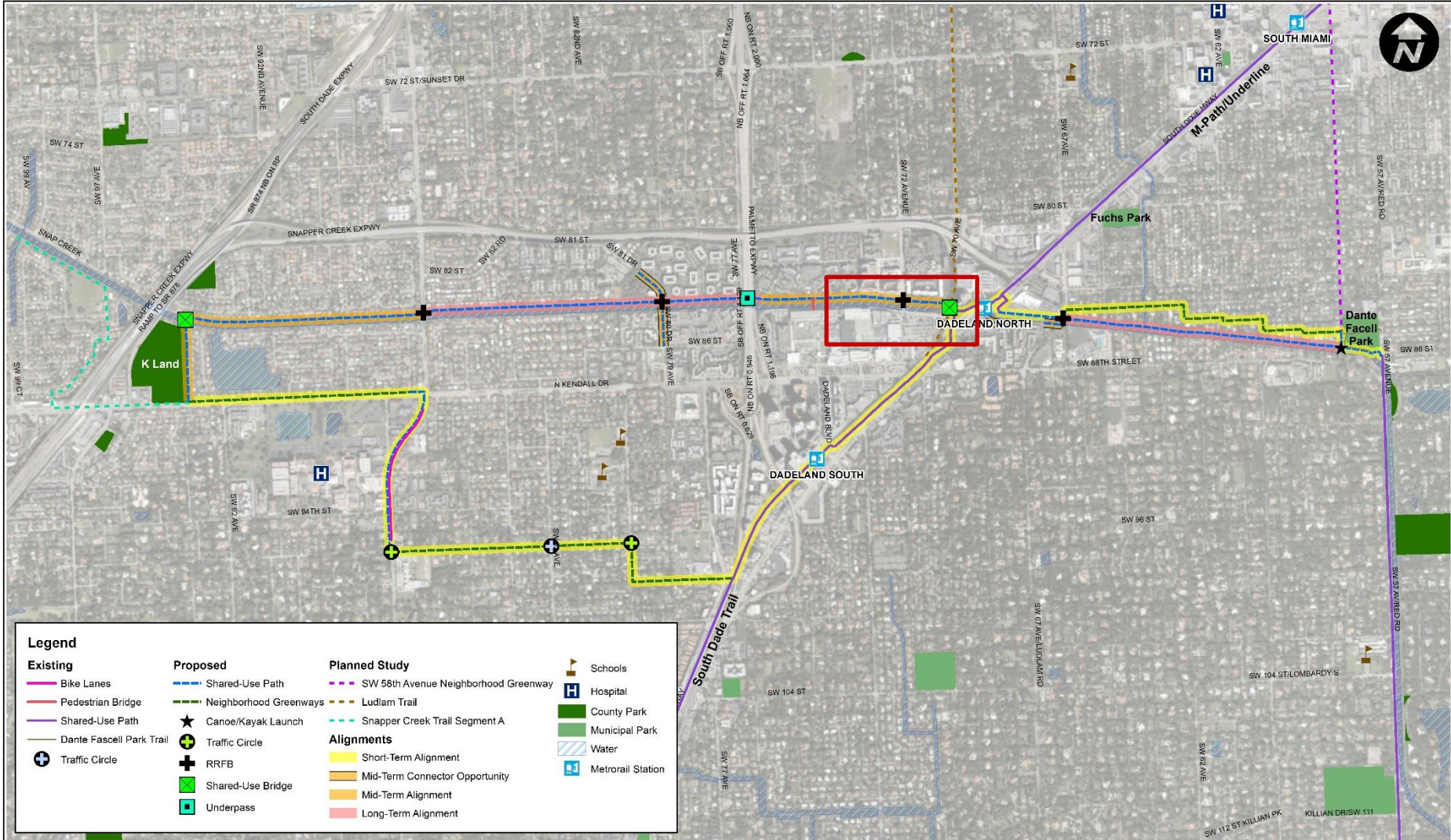


# Insets



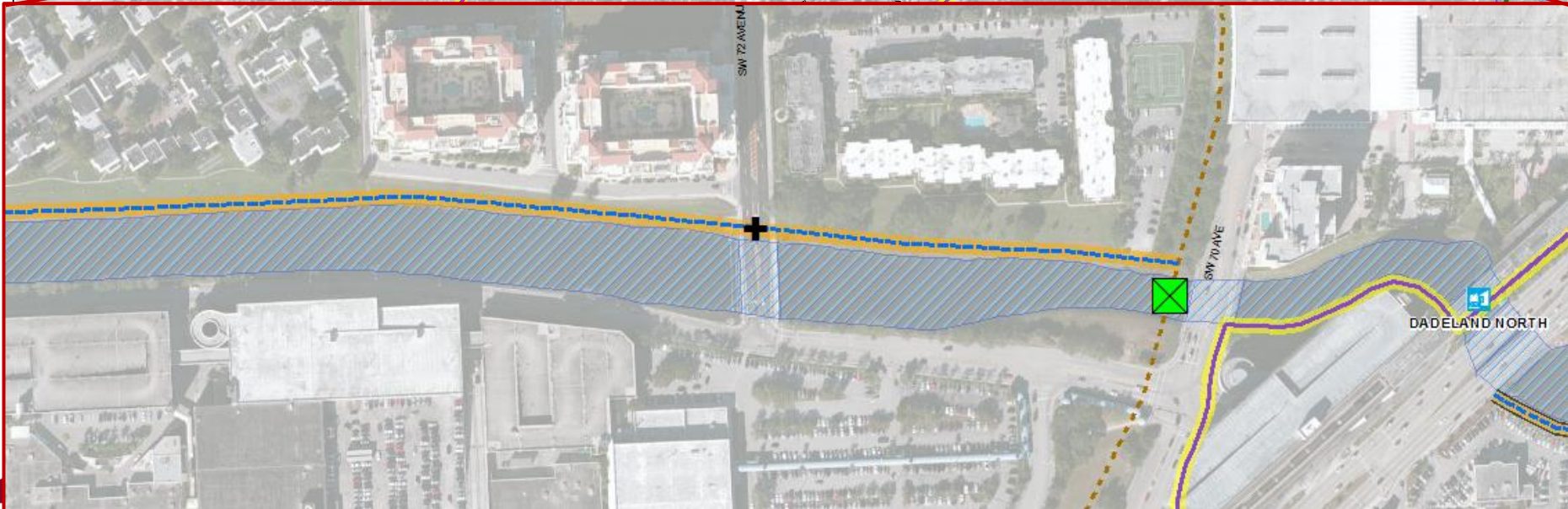
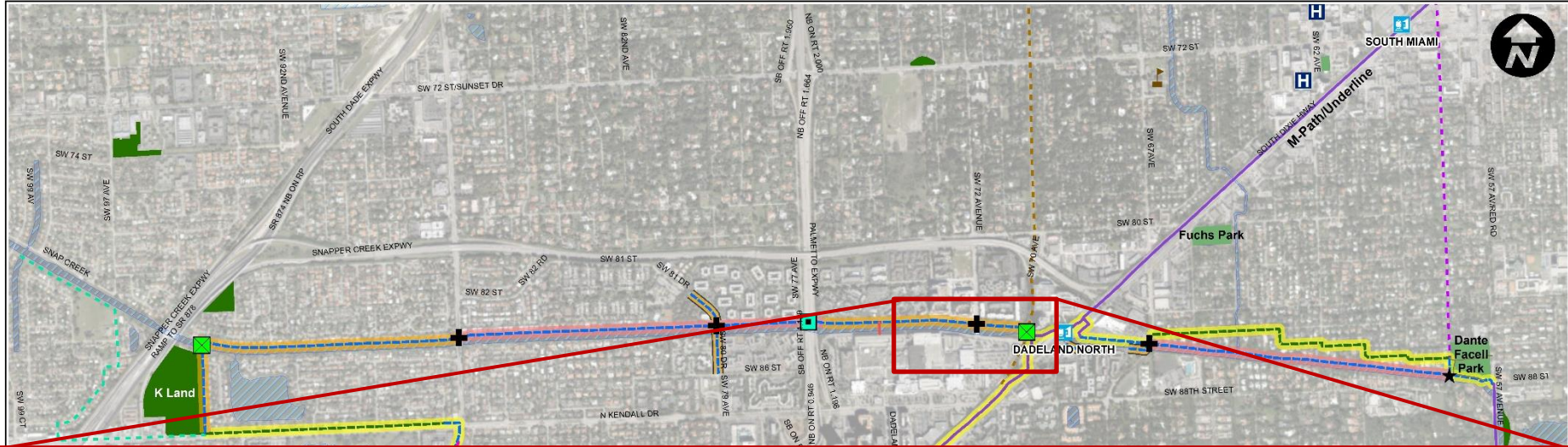


# Insets



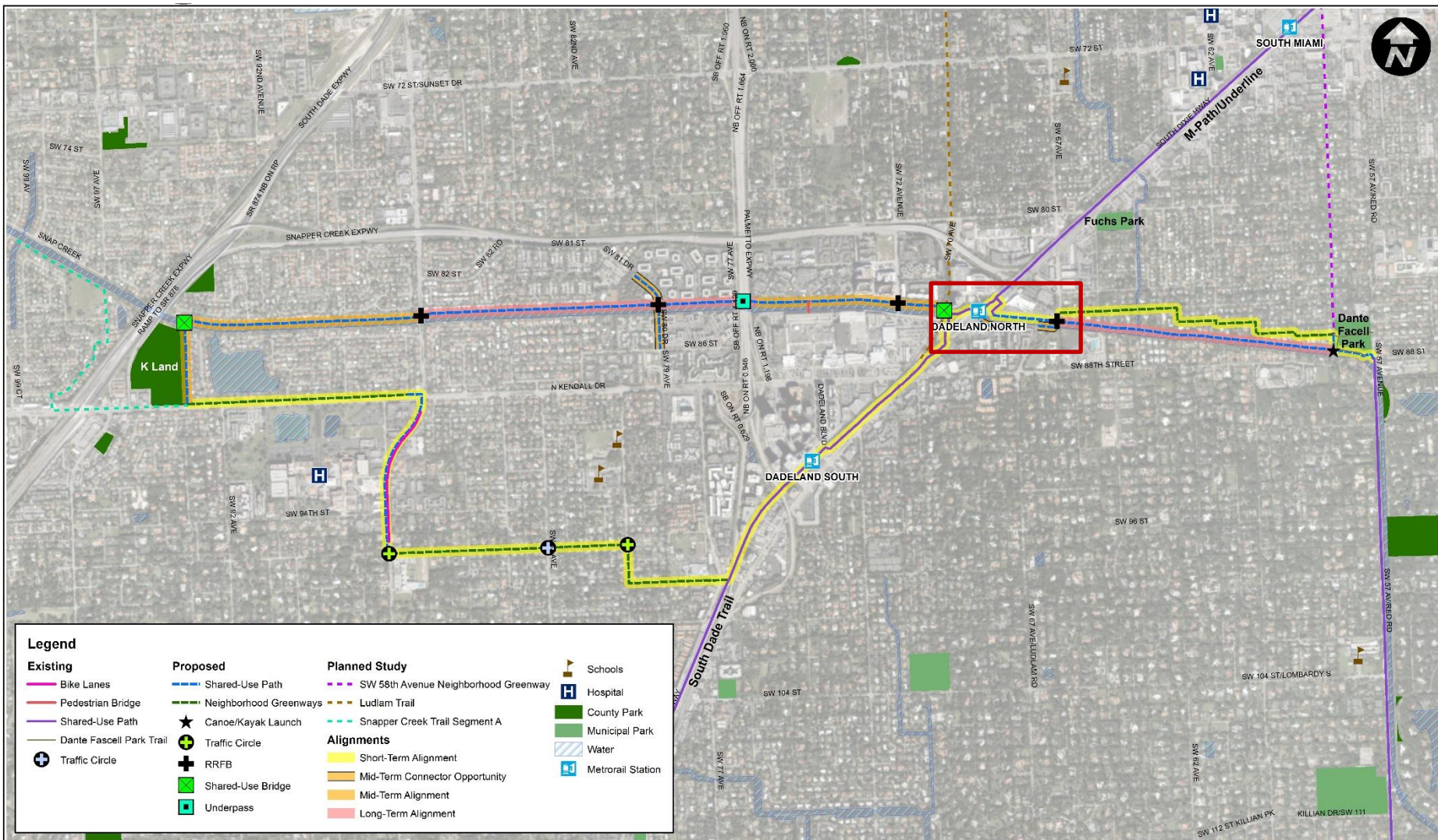


# Insets



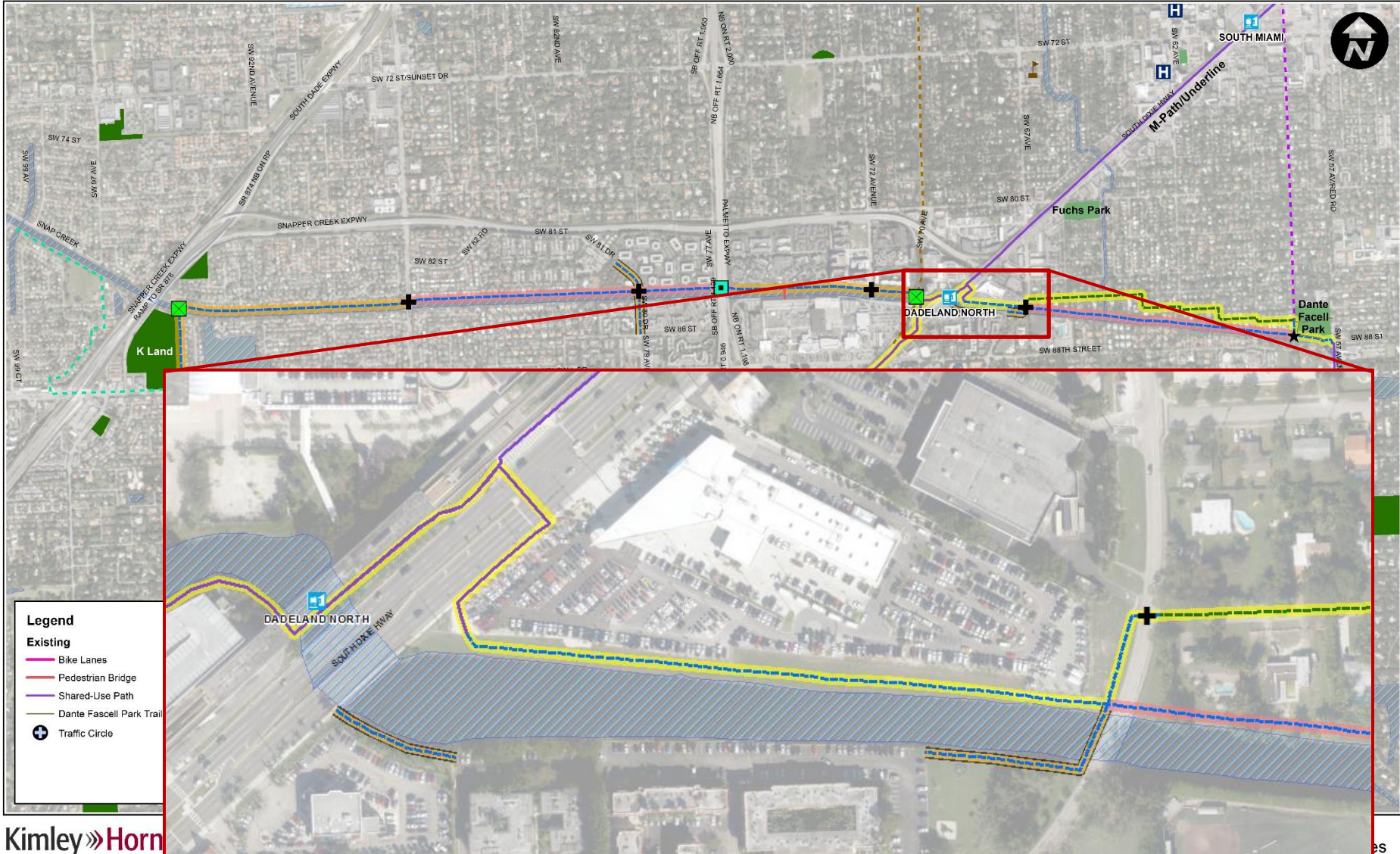


# Insets





# Insets





# Infrastructure Needs

- Shared-Use Path
  - Shared use paths are non-motorized transportation trails that are typically used by bicyclists and pedestrians. Shared use paths may vary from a wide sidewalk in the street's right-of-way to a paved trail separate from the roadway such as a canal or park.
- Neighborhood Greenways
  - Enhanced shared streets that will improve connectivity to residential areas. It incorporate a variety of elements including bicycle shared lane markings (sharrows), traffic calming, and bike route and wayfinding signage to provide a comfortable and low-stress environment that encourages the use of non-motorized modes of transportation.



# Shared-Use Path





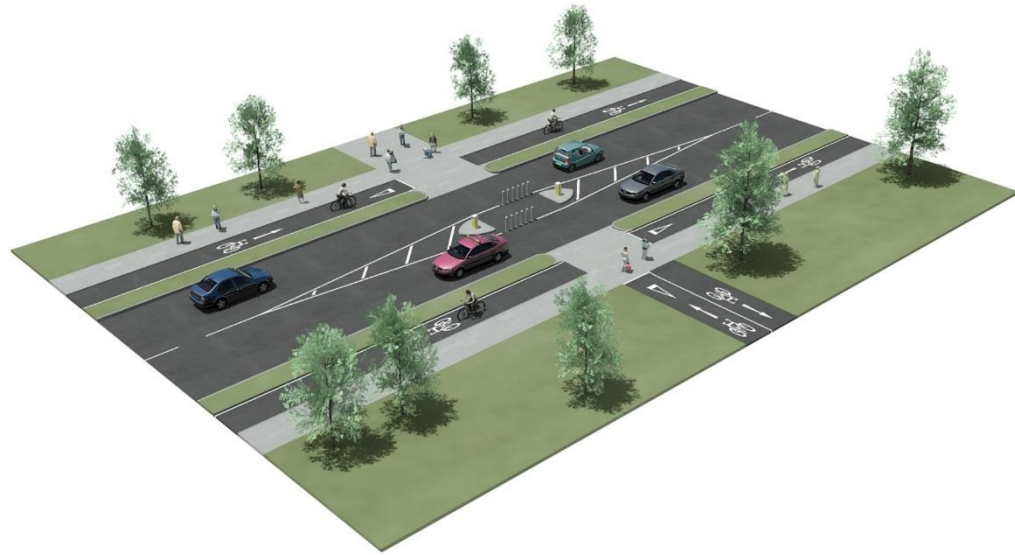
# Neighborhood Greenway





# Other Important Features

- Rectangular Rapid Flashing Beacon (RRFB)
  - Allows non-motorized traffic an opportunity for a safer mid-block crossing.
  - Consists of a high emphasis crosswalk with two flashing, rectangular shaped beacons that light up to alert motorists when someone is using the crosswalk.





# Other Important Features

- Canoe/Kayak Launch
  - At Dante Fascell Park/south end of SW 58<sup>th</sup> Avenue neighborhood greenway
  - Connects to the County's blueway network.





# Demonstration Project

- Shared use path along the canal between Dadeland North Metrorail Station and SW 67<sup>th</sup> Avenue/Ludlam Road
  - Provide a shared-use path along the north bank of the Snapper Creek (C-2) Canal from U.S. 1/S Dixie Highway to SW 67<sup>th</sup> Avenue.
  - Provide a trail connection to connect to SW 85<sup>th</sup> Street while still restricting motor vehicle traffic.
  - Install RRFBs across SW 67<sup>th</sup> Avenue at the trail crossing.
  - Install zig-zag pavement markings on SW 67<sup>th</sup> Avenue as advanced warning of the trail crossing.

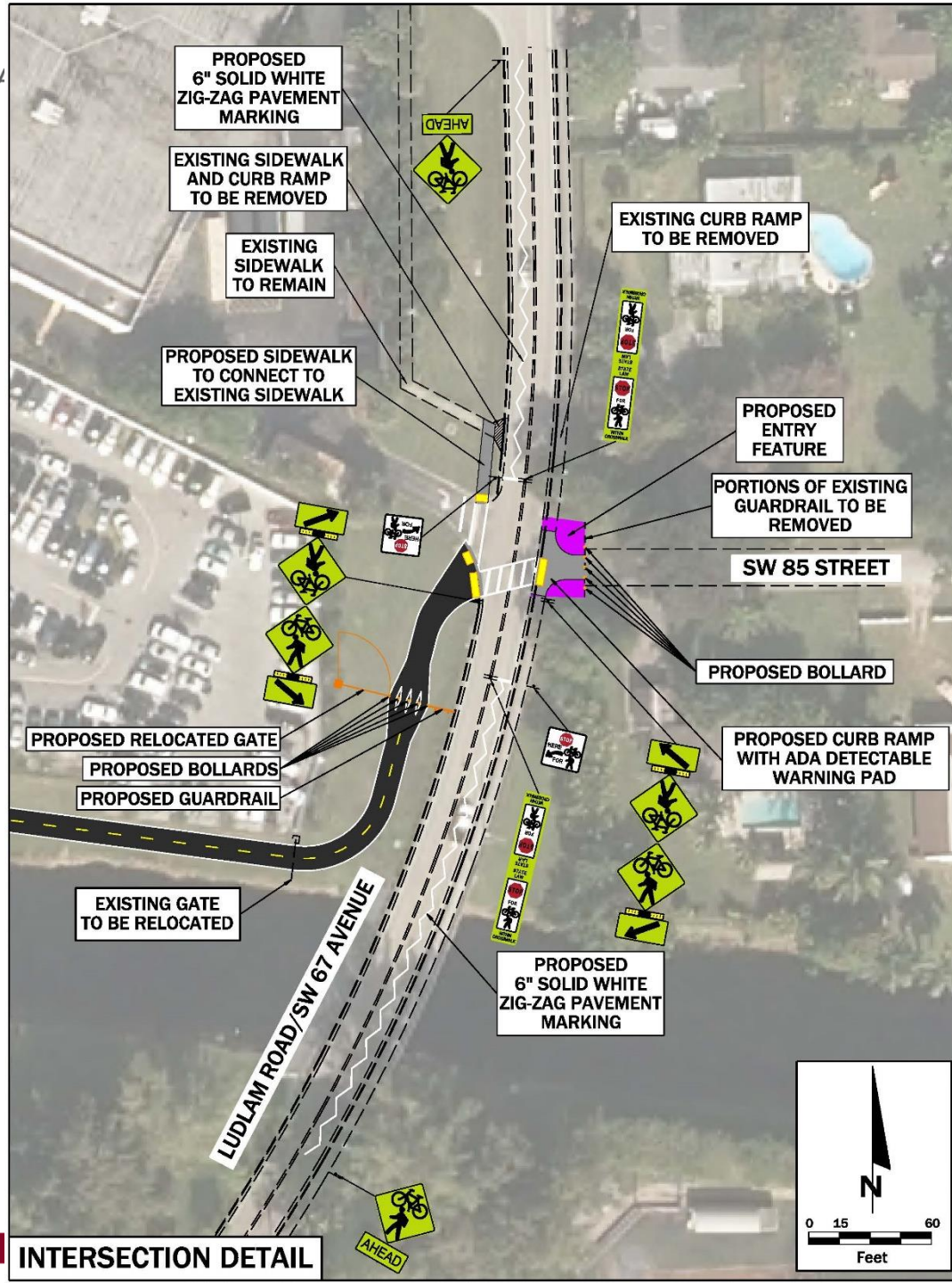


# Demonstration Project





# Demonstration Project





# Thank You!

for listening to tonight's workshop presentation

