

Miami-Dade **TP** Task Force

SMART Street Transportation Enhancements Program

SMART STEP

W 74TH PLACE AT W 3RD COURT & AMELIA EARHART PARK ENTRANCE - HIALEAH, FL



TPO TASK FORCE MISSION

The Miami-Dade Transportation Planning Organization (TPO) Urban & Non-Urban Mobility Task Forces were created to focus on addressing bicycle and pedestrian mobility challenges in Miami-Dade County. As a result, the **SMART Street Transportation Enhancements Program (STEP)** was created to facilitate interagency coordination, innovation, and accelerated implementation of pedestrian and bicycle improvement projects that increase connectivity and enhance safety. The Miami-Dade TPO is working collaboratively with the Miami-Dade County Department of Transportation and Public Works (DTPW), Florida Department of Transportation District Six (FDOT D6), Miami-Dade County Parks, Recreation and Open Spaces (PROS), and municipalities to implement these SMART STEP projects countywide.



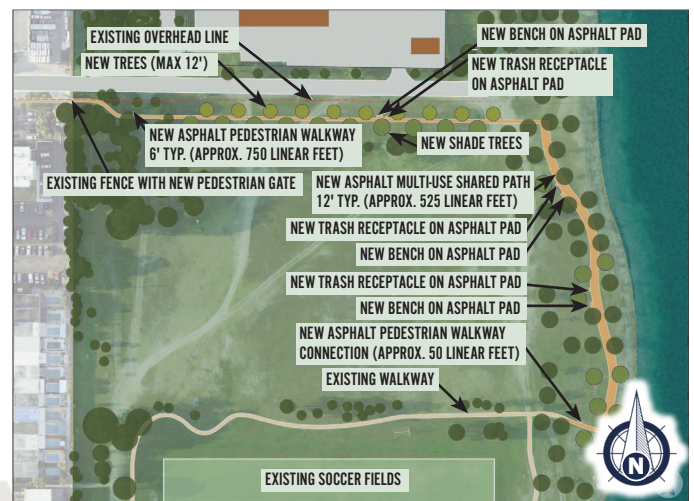
PROJECT LOCATION A

W 74th Place at W 3rd Court, Hialeah, FL



PROJECT LOCATION B

Amelia Earhart Park Entrance, Hialeah, FL



PROJECT OVERVIEW



The objective at these two locations was to enhance and prioritize pedestrian mobility along the corridor into Amelia Earhart Park. The improvements at “Location A” were made to the main crosswalk at the intersection of W 3 Court. The improvements at “Location B” include the installation of a new pedestrian access gate and age-friendly enhancements at the entrance to Amelia Earhart Park. In addition, hazardous conditions caused by illegal dumping have been addressed.

ESTIMATED PROJECT COSTS

LOCATION A	LOCATION B
\$5,000	\$262,000



SMART STEP



SUMMARY OF IMPROVEMENTS

- Crosswalk pavement marking improvements

W 3rd COURT - BEFORE



W 3rd COURT - AFTER



SUMMARY OF IMPROVEMENTS

- Age-friendly pedestrian enhancements
- Pedestrian access to Amelia Earhart Park

AMELIA EARHART PARK ENTRANCE - BEFORE



AMELIA EARHART PARK ENTRANCE - AFTER



AMELIA EARHART PARK WALKWAY - BEFORE



AMELIA EARHART PARK WALKWAY - AFTER



FOR MORE INFORMATION, PLEASE CONTACT:

Kevin Walford – Project Manager
Kevin.Walford@mdtpo.org

305-375-2642

PLEASE VISIT OUR PROJECT WEBSITE FOR ADDITIONAL INFORMATION AND PROJECT UPDATES www.miamidadetpo.org/website_goeshere



FOLLOW US ON SOCIAL MEDIA

 [@miamidadetpo](https://www.facebook.com/miamidadetpo)

 [@miamidadetpo](https://twitter.com/miamidadetpo)

 [@miamidadetpo](https://www.instagram.com/miamidadetpo)

 [Miami-Dade TPO](https://www.youtube.com/Miami-Dade TPO)

 [Miami-Dade TPO](https://www.google.com/Miami-Dade TPO)

 [Miami-Dade Transportation Planning Organization](https://www.linkedin.com/Miami-Dade Transportation Planning Organization)