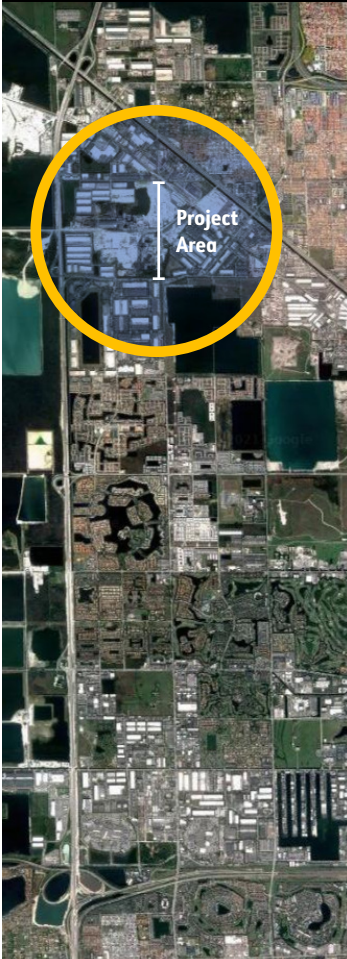


NW 107TH AVENUE EXTENSION STUDY



STUDY OVERVIEW

Miami-Dade County is divided into seven well-defined geographic sections identified as Transportation Planning Areas. Each Transportation Planning Area, identified by the Miami-Dade Transportation Planning Organization (TPO), is distinguished by its own characteristics, growth rates, needs, and transportation challenges. This study examines the current and projected travel patterns in the Northwest Transportation Planning Area in Miami-Dade County. The study provides insight into the effects of projected growth and identified infrastructure improvements. In particular, the effect of the extension of NW 107th Avenue from NW 106th Street to NW 122nd Street on travel patterns is analyzed and documented. The study also identified a list of potential projects, which are documented in the full report.

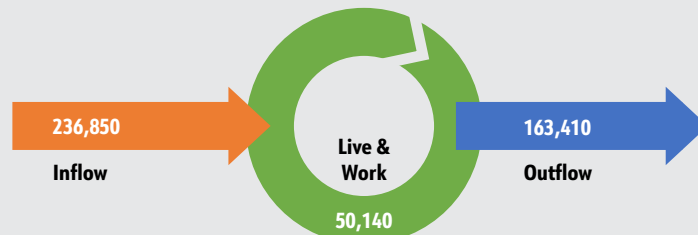
NORTHWEST PLANNING AREA CHARACTERISTICS

The Northwest Transportation Planning Area is well connected through a variety of modes. Many of the facilities are part of the Strategic Intermodal System (SIS), a network of facilities of vital importance to the economy of the state. These include highway, railways, waterway, airports, freight, terminals, passenger terminals, and fixed guideway terminals. The Northwest Planning Area plays a vital role in the economy of the Southeast region of Florida and accommodates a significant amount of industrial land uses due to its prime location, zoning, and excellent connections with Port Miami, Miami International Airport (MIA), and the region.

STUDY BACKGROUND

During the May 20, 2021, Transportation Planning Organization (TPO) board meeting, Resolution 20-2021 was approved, authorizing the TPO to study travel patterns within the northwest quadrant of Miami-Dade County. This project provides a comprehensive understanding of transportation movements, effects, and the various associated impacts within the Northwest Planning Area, which includes the Cities of Doral, Hialeah, Hialeah Gardens, Miami Lakes, Opa-Locka, Sweetwater, and the Town of Medley.

CURRENT WORK TRIP PATTERNS:



PROJECT BENEFITS:

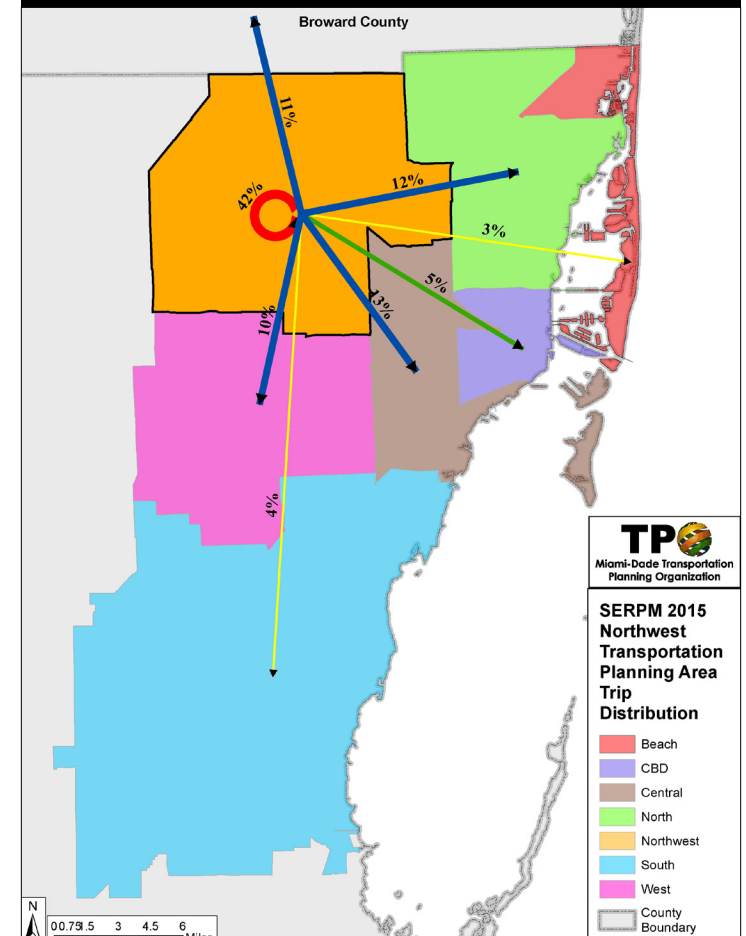


2.32 Minutes Average **Trip** Travel Time Savings
760 Hours Average **Daily** Travel Time Savings

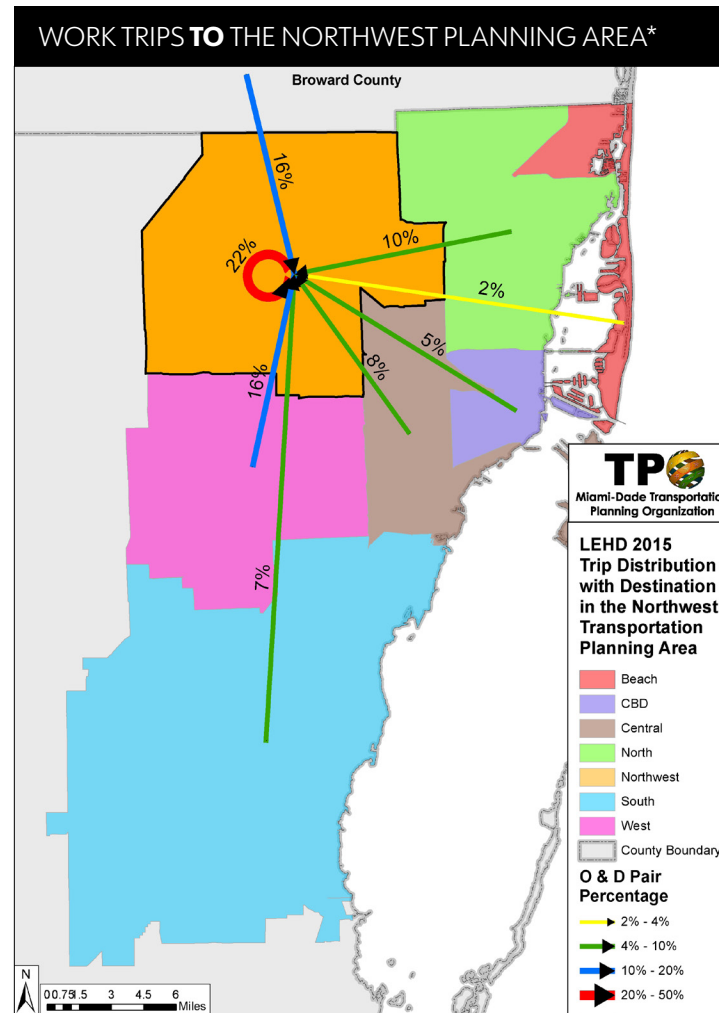
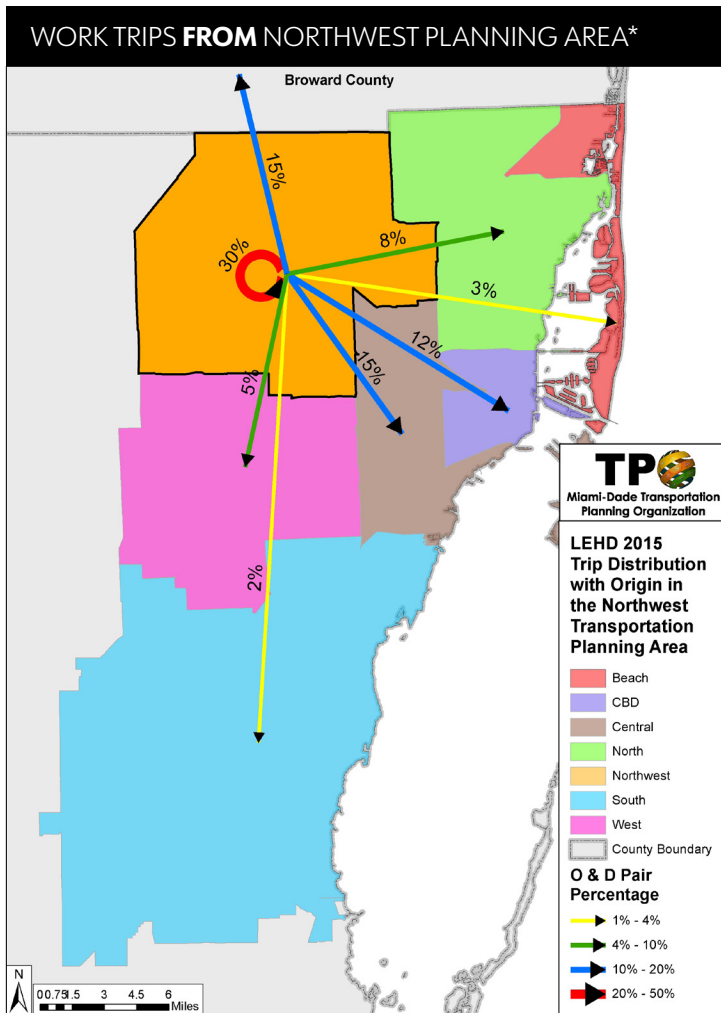


0.55 Miles Average **Trip** Travel Reduction
10,800 Miles Average **Daily** Travel Reduction

CURRENT* — ALL TRIPS



*2015 Southeast Florida Regional Planning Model (SERPM) Data



*2019 Longitudinal Employer Household Dynamics (LEHD) Data

SUMMARY OF FINDINGS

Employment growth in the Northwest Planning Area is 1.5%, higher than the 1.3% county rate, while population growth is 0.9%, slightly lower than the 1.1% annual county rate. The area accommodates a significant number of work trips due to its industrial employment locations. With a growing economy, maintaining good connectivity in the Northwest Planning Area is vital for residents, businesses, and visitors within the planning area, Miami-Dade County, and the region.

The study analyzed the impacts of the NW 107th Avenue extension on travel patterns in the area. The extension will provide more direct access to destinations south of West Okeechobee Road. It will also provide relief to West Okeechobee Road and the Homestead Extension of Florida's Turnpike (HEFT) by eliminating the need to use those roadways to access destinations in the area to the south of West Okeechobee Road. The direct access will result in significant travel time and travel miles savings.

AREA POPULATION GROWTH

	2015	2045	Annual Growth
Northwest Planning Area	375,543	477,861	0.9%
Miami-Dade County	2,629,861	3,532,976	1.1%
Region*	5,817,912	7,509,098	1.0%

*Palm Beach, Broward and Miami-Dade Counties

AREA EMPLOYMENT GROWTH

	2015	2045	Annual Growth
Northwest Planning Area	266,347	388,970	1.5%
Miami-Dade County	1,318,040	1,813,709	1.3%
Region*	2,997,442	3,982,824	1.1%

*Palm Beach, Broward and Miami-Dade Counties