



Miami-Dade Transportation
Planning Organization

SMART TRENDS TRANSPORTATION SUMMIT



PANEL

Infrastructure Investment
& the Economy



Florida's Transportation Infrastructure Investments

Alex Lastra, Commissioner

Florida Transportation Commission



June 3, 2022

Florida Transportation Commission



- Provides leadership in meeting Florida's transportation needs
- Provides policy guidance on issues of statewide importance
- Maintains oversight and public accountability
 - FDOT
 - Statutorily specified transportation authorities
- Recommends three candidates to Governor for FDOT Secretary



Florida Transportation Commission



Ronald Howse
Chairman



Jay Trumbull
Vice Chairman



John Browning



Richard Burke



Julius Davis



David Genson



Russell "Rusty" Roberts



Alex Lastra

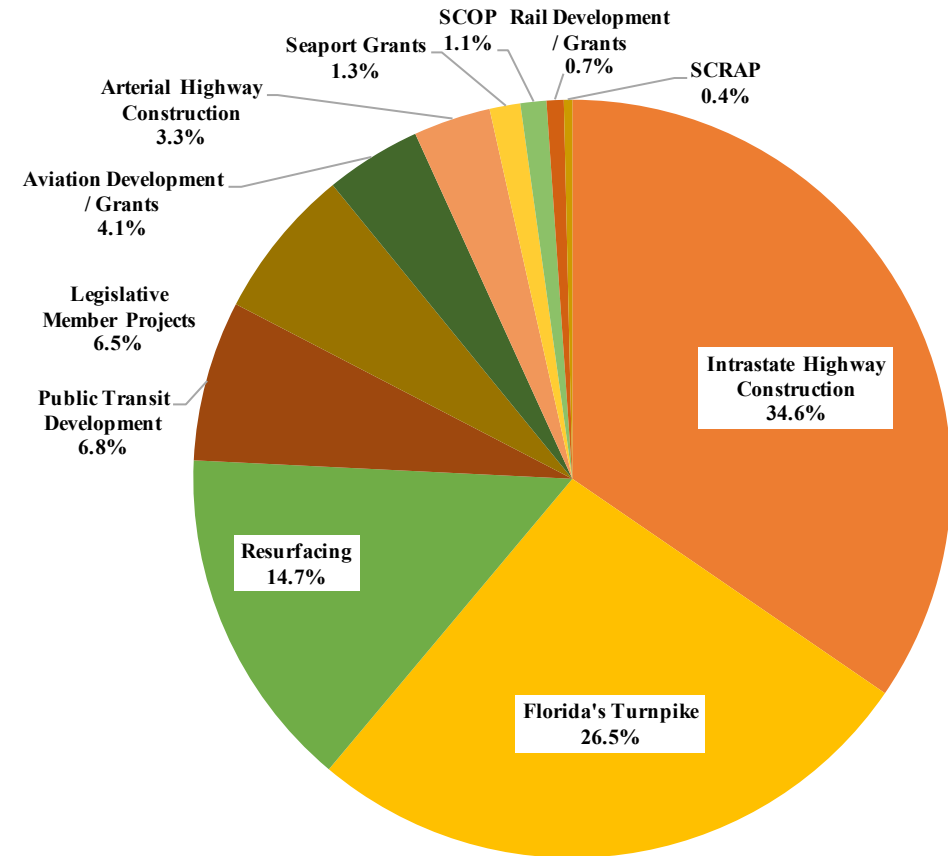


Florida's Transportation Infrastructure Investments

- **\$12.7 Billion
FDOT budget
approved by
legislature**

Florida's Transportation Infrastructure Investments

Fiscal Year 2022 Florida Department of Transportation Budget



SOURCE: Capital City Consulting 2022 FDOT Budget Snapshot from GAA (HB 5001).

FDOT District 6
Infrastructure
Investments –
*Five year
tentative work
program

DISTRICT 6
Five Year Work Program - \$3.3B

Percent of Statewide Program – 6.6%

Safety Enhancement Initiatives	\$61.1M
Resurfacing	\$296.0M
Bridge Repair & Replacement	\$222.5M
State Highway System & Other Roads Construction	\$897.2M
Right of Way Land	\$176.8M
Product Support Consultants	\$571.4M
Operations & Maintenance Consultants/Contracts	\$636.9M
Freight, Logistics & Passenger Operations	\$393.9M

Lane Miles

Lanes Added – 5

Lanes Improved – 494

Bridges

Repaired - 17

Replaced - 6



*Tentative work program, as presented to the FTC on January 10, 2022



FDOT Macroeconomic Analysis

Source: FDOT Macroeconomic Analysis,
August 2020

**Florida's transportation
projects expected to yield**



benefit

for every dollar invested

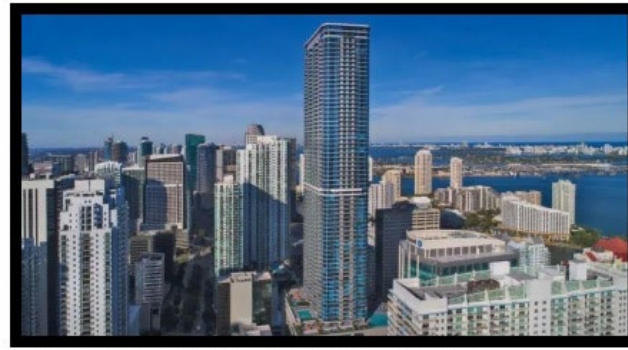


Florida's Transportation Infrastructure Investments - Moving Miami Forward

\$13.2 B

- Expected benefit over the next five years

Recent Headlines



PANORAMA, THE NEWEST AND TALLEST RESIDENTIAL TOWER, TOUTS 85 FLOORS OF LUXURY.

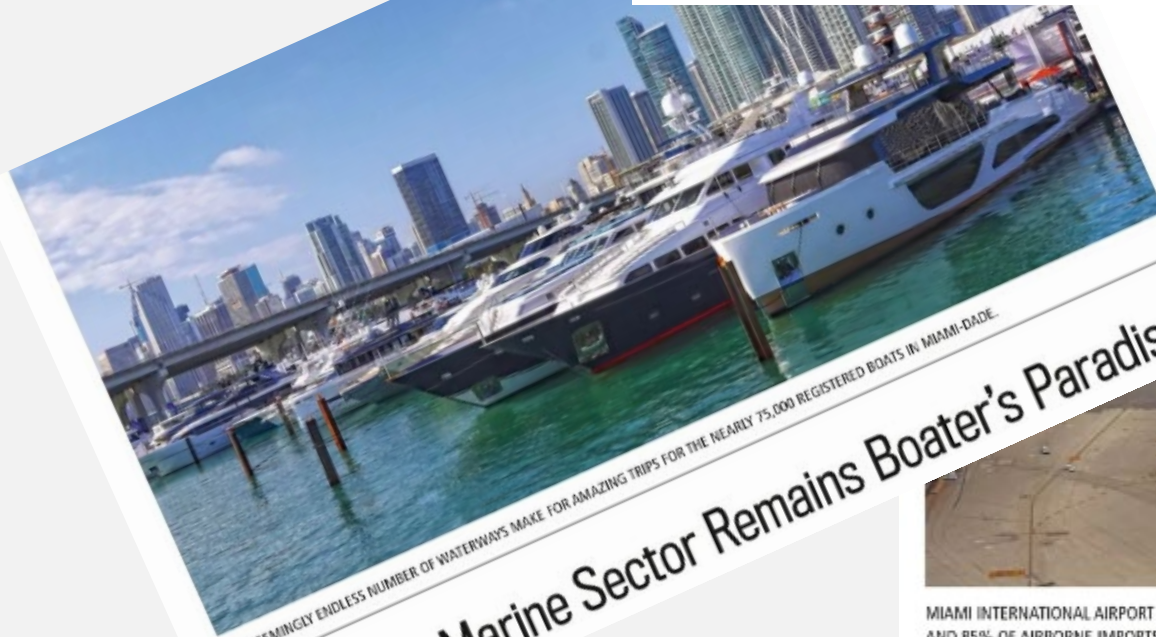
Miami Skyline, Suburbs Keep Growing

Tourism Still Drives Miami's Regional Economy

When MSC Group broke ground in March on its \$350 million cruise terminal at PortMiami, it screamed "Miami."



PORTMIAMI IS MIAMI-DADE COUNTY'S SECOND MOST IMPORTANT ECONOMIC ENGINE, CONTRIBUTING \$43 BILLION ANNUALLY TO THE LOCAL ECONOMY AND SUPPORTING MORE THAN 334,500 JOBS IN SOUTH FLORIDA.



THE SEEMINGLY ENDLESS NUMBER OF WATERWAYS MAKE FOR AMAZING TRIPS FOR THE NEARLY 75,000 REGISTERED BOATS IN MIAMI-DADE.

Miami's Marine Sector Remains Boater's Paradise



MIAMI INTERNATIONAL AIRPORT HANDLES 70% OF ALL INTERNATIONAL CARGO, AND 85% OF AIRBORNE IMPORTS.

Manufacturing, Distribution and Logistics at Home in Miami

MIAMI-DADE
TECHNOLOGY

Startups, Tech and Venture Money in the Sunshine

Greater Miami's role as a technology and startup destination can be seen from headlines to marquee to digital wallets of its leaders.



Recent Headlines

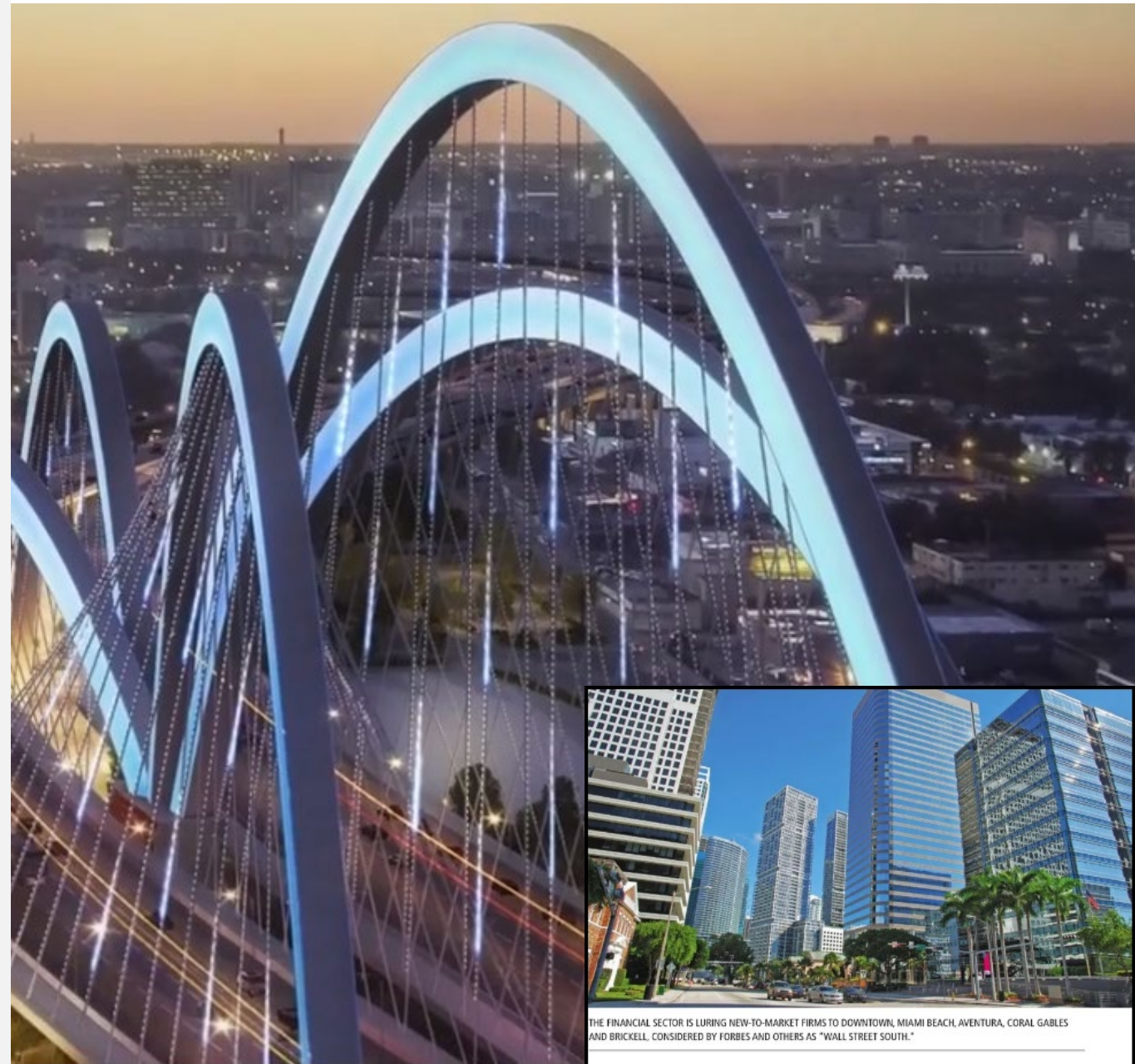
MIAMI-DADE
REAL ESTATE

GROUND ZERO
IN BATTLE FOR
RESILIENCY



MIAMI-DADE COUNTY IS HOME TO MORE THAN 100 FOREIGN CONSULATES, FOREIGN TRADE OFFICES AND BI-NATIONAL CHAMBERS OF COMMERCE.

Miami: The 'City of the Future'



THE FINANCIAL SECTOR IS LURING NEW-TO-MARKET FIRMS TO DOWNTOWN, MIAMI BEACH, AVENTURA, CORAL GABLES AND BRICKELL. CONSIDERED BY FORBES AND OTHERS AS "WALL STREET SOUTH."

'Wall Street South' Home to Banking, Private Equity and Venture Firms

Source: Florida Trend, May 2022

Recent Headlines

Economic Backbone

Transportation



PortMiami is home to Virgin Voyages' Scarlet Lady cruise ship.

PortMiami: Terminal Activity

Virgin Voyages' new cruise terminal is open at PortMiami. The terminal, part of a county project aimed at reducing emissions from vessels at berth, is home to the 2,770-passenger Scarlet Lady.

There are two other terminals under construction at PortMiami. MSC Cruises' terminal will be able to accommodate two ships, making it one of the largest cruise terminals in the world when it opens in 2024. Carnival Cruises' terminal is closer to completion. It is renovating terminal F, built in December 2010, to accommodate its newer ships joining the fleet.



Hydi Webb has been named director of PortMiami. She had been serving as interim director. She replaces Juan Kuryla, who left to work at Norwegian Cruise Line Holdings last year.

► Florida Ports

Port	Cruise Passengers	Cargo (Tons)
Port Canaveral	368,906	5,202,533
PortMiami	247,529	705,322
Port of Key West	161,197	0
Port Everglades	116,946	121,437,894
Port of Palm Beach	13,935	2,466,773
Port of St. Petersburg	203	0
Port Tampa Bay	0	33,396,991
JaxPort	0	9,369,782
Port Manatee	0	10,182,737
Port Panama City	0	1,952,282
Port of Fernandina	0	0
Port of Pensacola	0	274,313
Port Citrus	0	0
Port of Fort Pierce	0	0
Port of Port St. Joe	0	0

Note: Ranked by cruise passengers. Not all numbers are finalized. Not all ports resumed cruises post-COVID at the same time. Totals include one-day and multi-day cruises and for the majority of ports represent October 2020 to September 2021. Each port has a unique mix of types of cargo and public and privately held facilities; those figures are intended to reflect all cargo and cruise passengers. However, port rankings will vary depending on the metrics, time frame, and facilities included. Source: Florida Ports Council. Research by Vanessa Caceres



MIA: Record Cargo, ITA Airways, Biometric Update

Miami International Airport is coming off a second record year for air cargo in 2021, with 2.7 million tons, 17% above the 2.3 million tons handled in 2020. International freight grew 17% to 2.2 million tons, while domestic freight rose 15% to 500,000 tons. Late last year, both DHL Express and FedEx Express completed major renovations and expansions of their cargo hubs. For international freight, MIA continues to rank as the busiest airport in the U.S. and ninth busiest in the world.

In other MIA news, Italy's new national airline, ITA Airways, launched service and plans to offer daily flights in June. Italy was one of MIA's top 20 international markets before the pandemic, generating nearly 400,000 passengers in 2019. Italy is not currently served by any other airline at MIA.

Installation of biometric boarding at all of MIA departure gates, which will replace manual boarding pass scanning with facial comparison screening, is expected to be complete by the end of the year. — By Nancy Dahlberg

Brightline Connection

Following the completion of a 3.5-mile section of track leading into Orlando International Airport, Brightline's 170-mile extension between West Palm Beach and Orlando is 70% done and will be finished by the end of 2022. When service begins in 2023, passengers will be able to travel from OIA to downtown Miami in about three hours for about \$100. Trains will travel at 35 mph at the airport before heading east along S.R. 528 toward Cocoa, where they will approach 125 mph. Riders also will have the option of booking a ride in a private car, a shared ride aboard an eShuttle bus or bike rental to get from the train station to their final destination (as long as it's within five miles of the Brightline station) through a recently unveiled service called Brightline+.

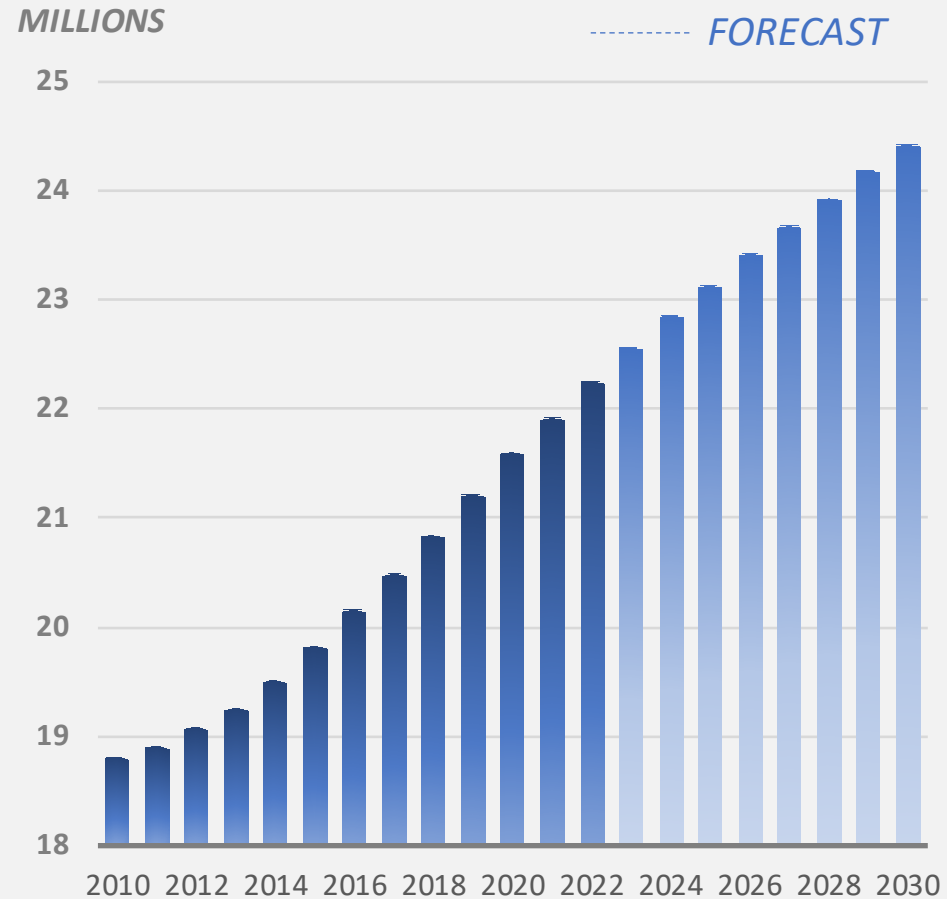


Population Growth





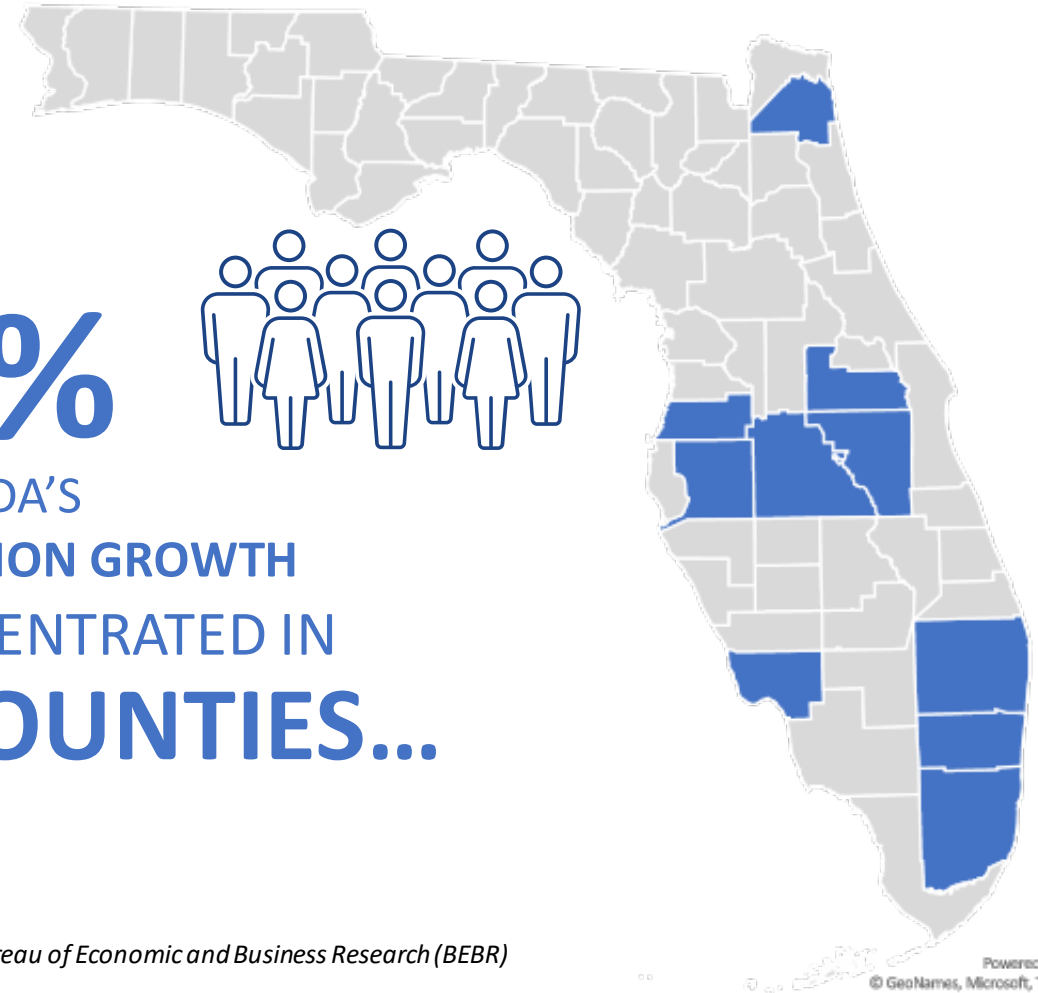
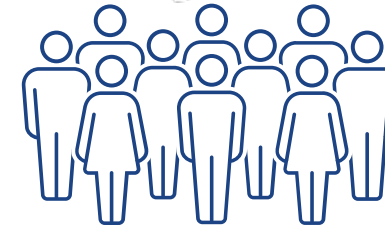
FLORIDA POPULATION GROWTH



Source: Florida Economic Estimating Conference

FLORIDA'S FASTEST GROWING COUNTIES

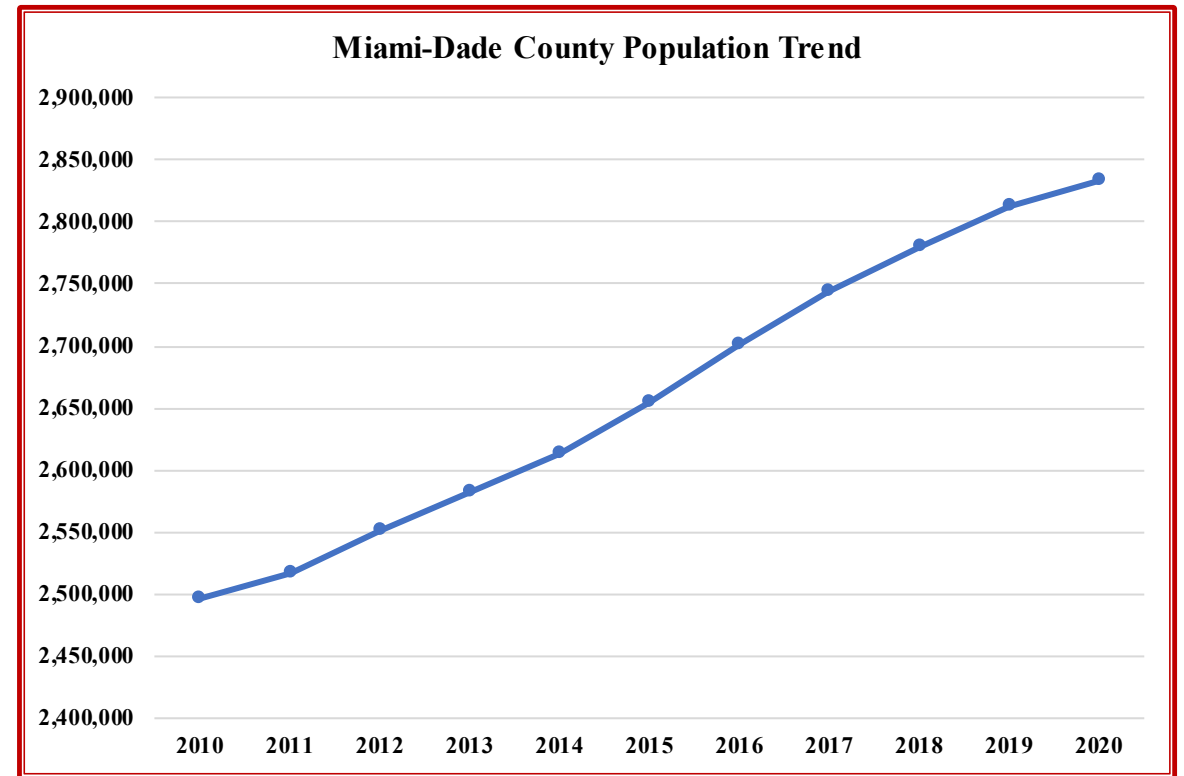
59%
OF FLORIDA'S
POPULATION GROWTH
IS CONCENTRATED IN
10 COUNTIES...



Source: Bureau of Economic and Business Research (BEBR)



Miami Dade County's Population Growth



Source: Bureau of Economic and Business Research (BEBR)



Moving Miami Forward

- Infrastructure investments accommodate growth
- Infrastructure investments allow innovative and creative solutions

Recent Headlines

Golden Glades park & ride transit hub nears opening

Written by Gabriela Henriquez Stoikow on February 8th, 2022

The \$60 million Golden Glades Park & Ride begun in December 2018 is to be ready within weeks, connecting with state roads 7 and 9/Northwest Seventh Avenue and leading to...



Recent Headlines

Tunnels could speed mass transit under downtown, Kendall

Written by [Gabriela Henriquez Stoikow](#) on May 17, 2022

The Miami-Dade Transportation Planning Organization is looking at the possibility of expanding the transit system underground. It just completed a study evaluating emerging technologies to assess the use of tunnel corridors in the county. The study used...

May 17, 2022 · [No Comment](#) · [Read More](#)



LATEST IN TRANSPORTATION

Tri-Rail says trains will be in downtown Miami by November

Written by [Gabriela Henriquez Stoikow](#) on May 10, 2022

In a more optimistic presentation to the Citizens' Independent Transportation Trust, Steven Abrams, executive director of the South Florida Regional Transportation Authority, reassured members that the Tri-Rail trains the authority oversees are going to roll into...

Recent Headlines

Miami-Dade to add 42 Proterra electric buses to existing order

The order brings the number of electric buses for Miami-Dade DTPW to 75 and includes installation of 75 chargers at three depots.

Mischa Wanek-Libman

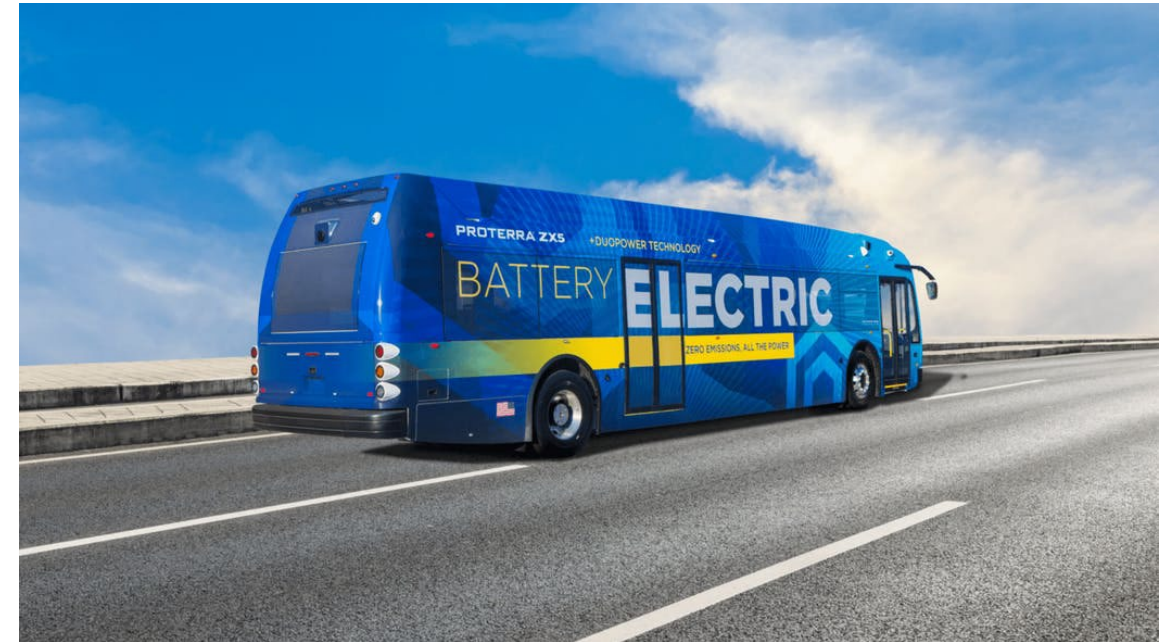
June 23, 2021

15 electric buses OK'd for South Dade Transitway

Written by Gabriela Henriquez Stoikow on May 17, 2022



Source: Miami Today
Mass Transit



Recent Headlines

Miami-Dade County breaks ground on TOD next to Coconut Grove Metrorail Station

Grove Central will provide 172,000-square feet of retail space, five levels of parking with approximately 1,270 parking spaces, as well as 402 residential units, including 60 work-force housing units.

Feb. 24, 2021



Miami-Dade breaks ground on South Corridor Rapid Transit Project

The South Dade TransitWay is one of six rapid transit corridors that will bring 63 percent of the county's population within two miles of the corridors.

Mischa Wanek-Libman

June 10, 2021



Recent Headlines



Transit-Oriented Development? Thousands Of Units Planned At Southland Mall, Next To New BRT Stop

May 11, 2022 · 74 Comments



Developers Propose 1,125 Apartments Near Brightline's New Aventura Station

April 7, 2022 · 68 Comments



Brightline's Miami To Orlando Rail Line Now Over 75% Complete

April 27, 2022 · 81 Comments



Florida's Transportation Infrastructure Investments

Alex Lastra, Commissioner

Florida Transportation Commission



THANK YOU!

Infrastructure Investment and the Economy

Jimmy Morales

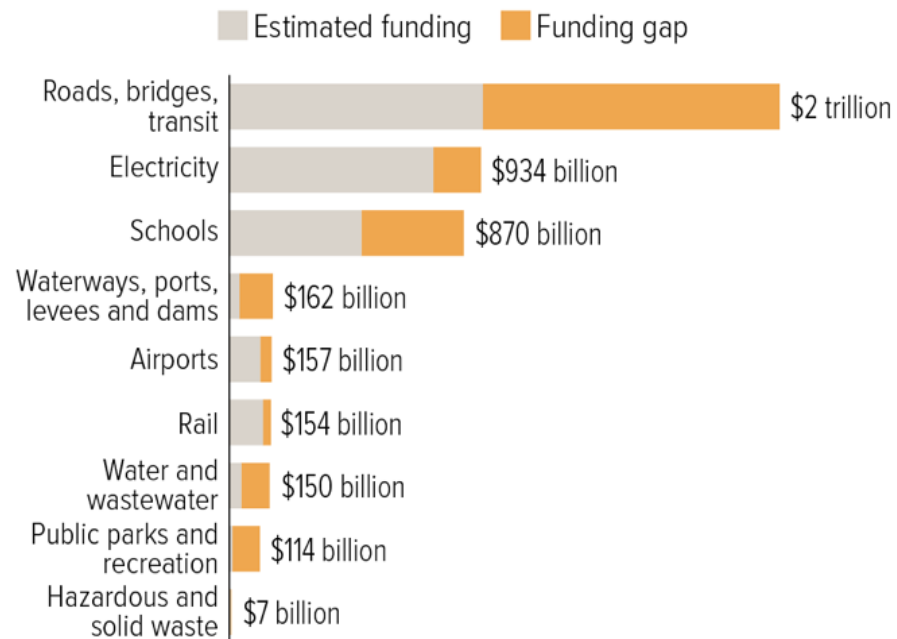
Chief Operations Officer,
Office of Mayor Daniella Levine Cava
Miami-Dade County



Infrastructure Investment and the Economy

Public Infrastructure Has Been Neglected

Infrastructure needs, funded and unfunded, 2016-2025



Source: American Society of Civil Engineers 2017 Infrastructure Report Card and Failure to Act series, published 2011-2017

CENTER ON BUDGET AND POLICY PRIORITIES | CBPP.ORG



Investments in mass transit, roads, highways, bridges, and ports move the people and goods that drive Miami-Dade's economy



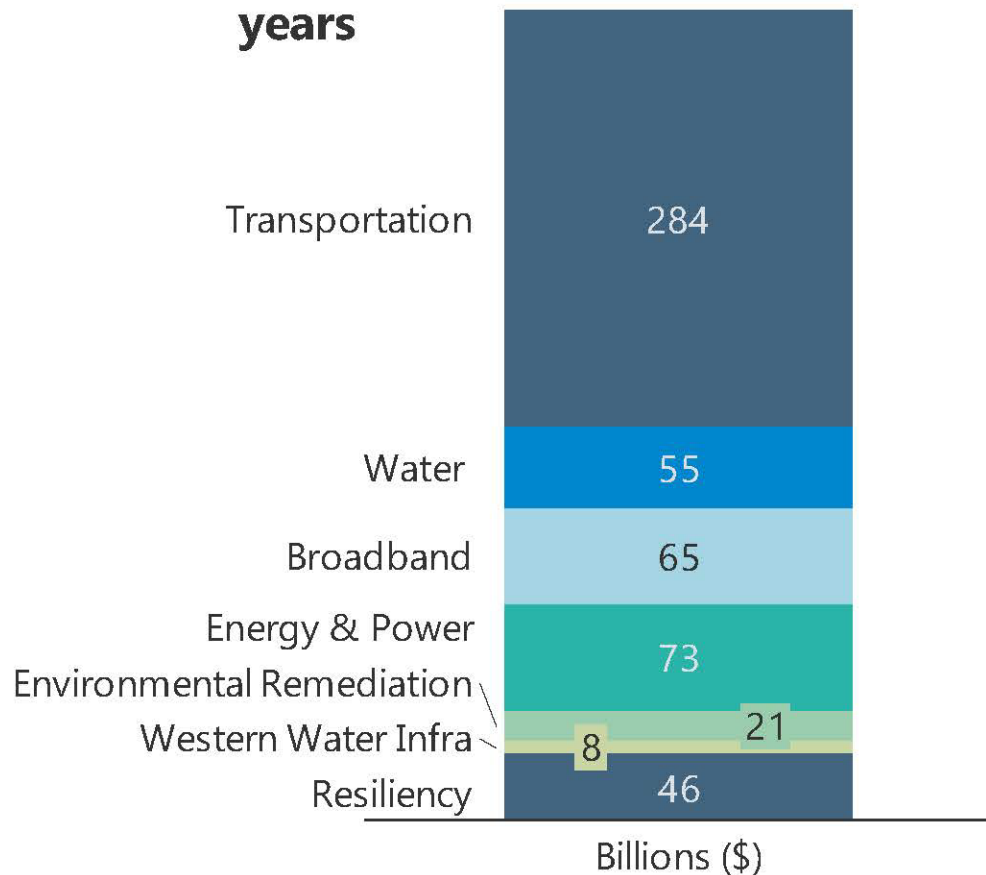
The state of our environment and the condition of our water, wastewater, and solid waste management systems impact our ability to grow



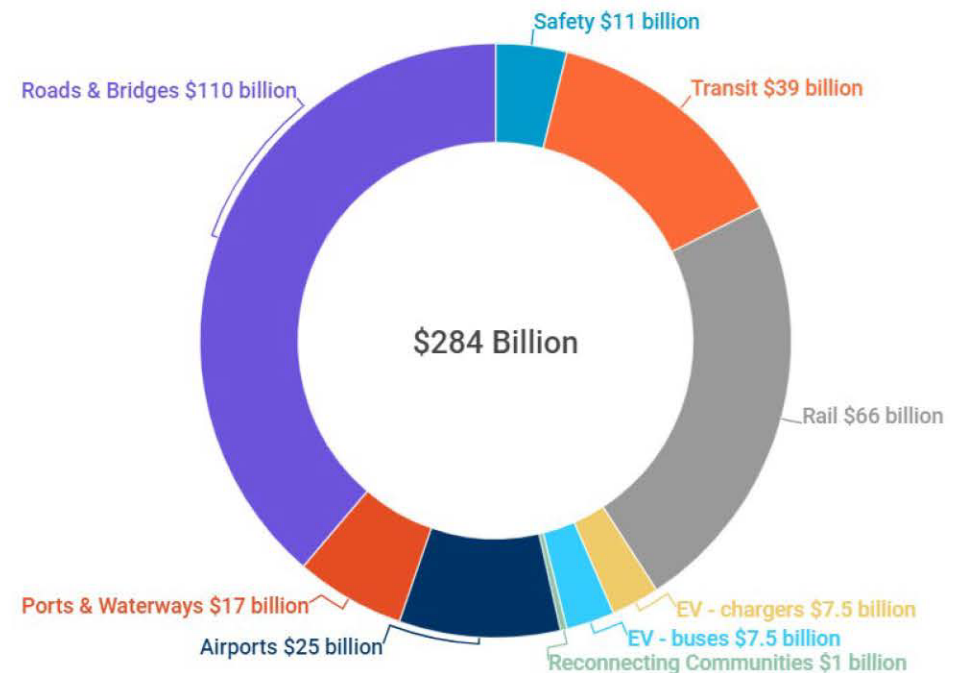
Infrastructure projects stimulate the economy create good paying jobs for locals, both in the long and short term

\$1 trillion (T) Infrastructure Investment and Jobs Act (IIJA) of 2021 proposes \$550B of new spending

- ▶ Proposes \$550 billion (B) in new spending for infrastructure over next 5 years



- ▶ \$284B in new spending for transport, incl. supplemental appropriations from the Treasury for FY2022-2026



Source: National Association of Counties (2021)



Miami-Dade Infrastructure Working Group

Mayor Daniella Levine Cava has established an interdisciplinary working group to prepare for all federal and state infrastructure funding opportunities

- The Infrastructure Working Group includes representatives across County departments, including
 - Office of Management & Budget
 - Internal Services Department
 - Airport
 - Seaport
 - Department of Transportation & Public Works
 - Water & Sewer Department
 - Department of Solid Waste Management
 - Division of Environmental Resources Management (DERM)
 - Office of Resilience

PortMiami Net Zero Project



PortMiami Net Zero Project

PortMiami is pursuing federal funding for nearly \$600 million worth of projects under the Net Zero Program:

- Cargo Supply Chain Master Plan
- Development of Inland Port
- Cargo Yard Expansion
- Improvements to Cargo Railyard
- Inland Logistic and Distribution Center
- Expansion of Intermodal Rail Capacity
- Reefer Racks Densification and Electrification
- Shore Power Switchgear Component

An aerial architectural rendering of a proposed development at Miami International Airport. The central focus is a large, multi-story building complex with a grid-like layout of interconnected volumes. The roofs of these buildings are integrated with solar panels and green spaces. To the right of the main building complex is a large, open paved area, possibly a parking lot or a cargo staging area, with some smaller structures and landscaping. In the background, the airport's tarmac is visible, with several commercial aircraft parked at gates. The foreground shows a multi-lane highway with a curved overpass. The overall scene is set during the day, with soft lighting suggesting early morning or late afternoon.

Miami International Airport Vertically Integrated Cargo Community Project

Miami International Airport Vertically Integrated Cargo Community Project

The VICC project at MIA will expand our regional cargo capacity and have a major impact on the local economy

Construction of the VICC (2023 – 2027)

- 13,620 total jobs
- \$837.2 Million in total labor income

Beginning VICC Operations (Annual Impact - 2028)

- 5,620 total jobs
- \$265.9 Million in total labor income

VICC at Full Capacity (Annual Impact)

- 7,940 total jobs
- \$316.6 Million in total labor income

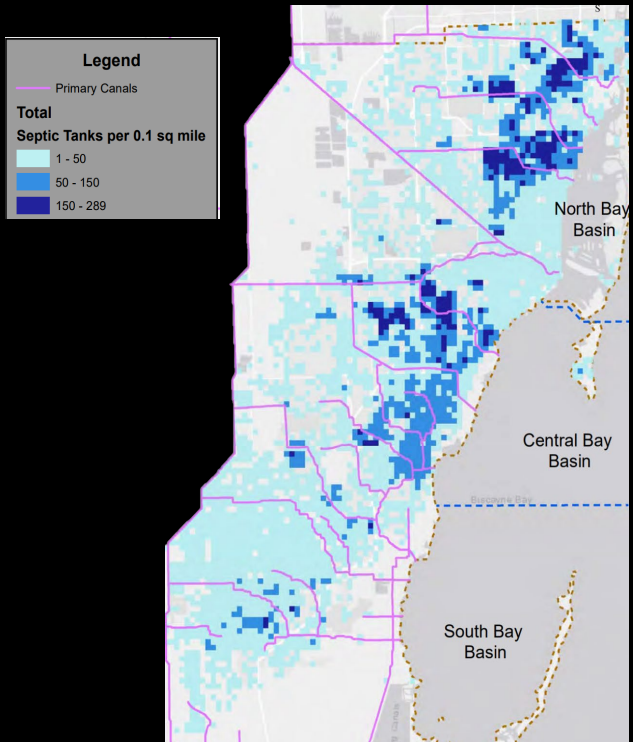
SMART Plan: South Dade TransitWay

Project Details

- 20-mile corridor of dedicated Bus Rapid Transit (BRT) lanes
- Extends from the Dadeland South Metrorail Station to the SV 344 Street Park-and-Ride/Transit Terminal
- Provides a mobility connection between the Miami Central Business District and:
 - Village of Pinecrest
 - Village of Palmetto Bay
 - Town of Cutler Bay
 - City of Homestead
 - Florida City

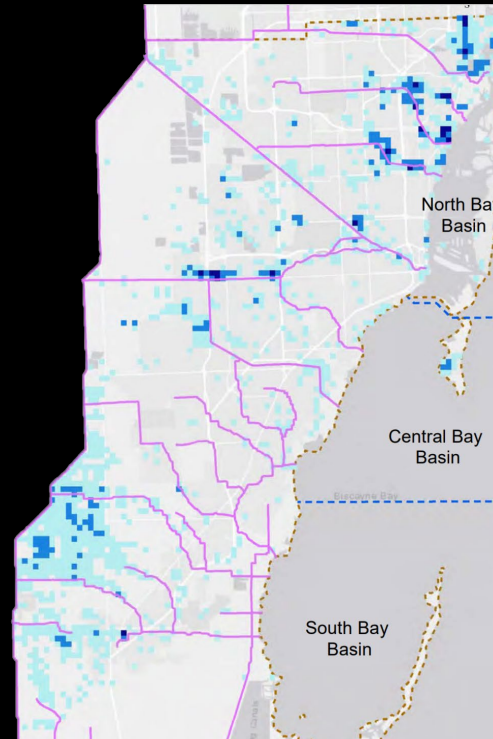


Connect 2 Protect: Septic-to-Sewer Conversion



Septic Tank Systems

~120,000 Countywide

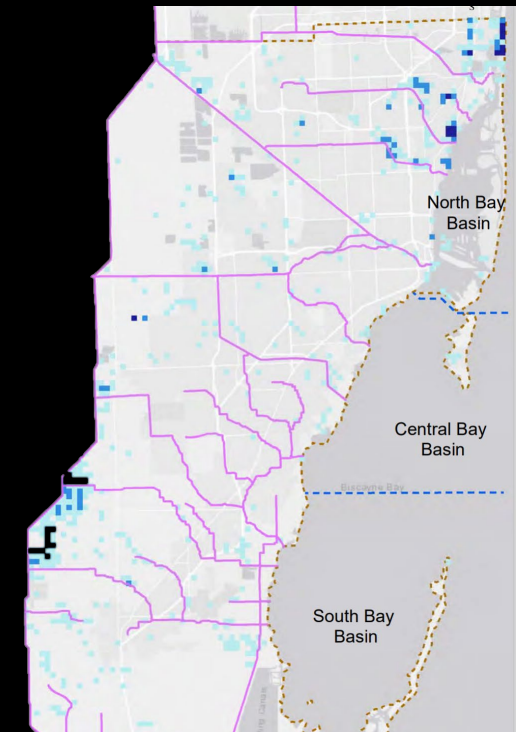


Compromised Septic Tank Systems

2020: ~7,000

2040: ~10,500

Loss of purification



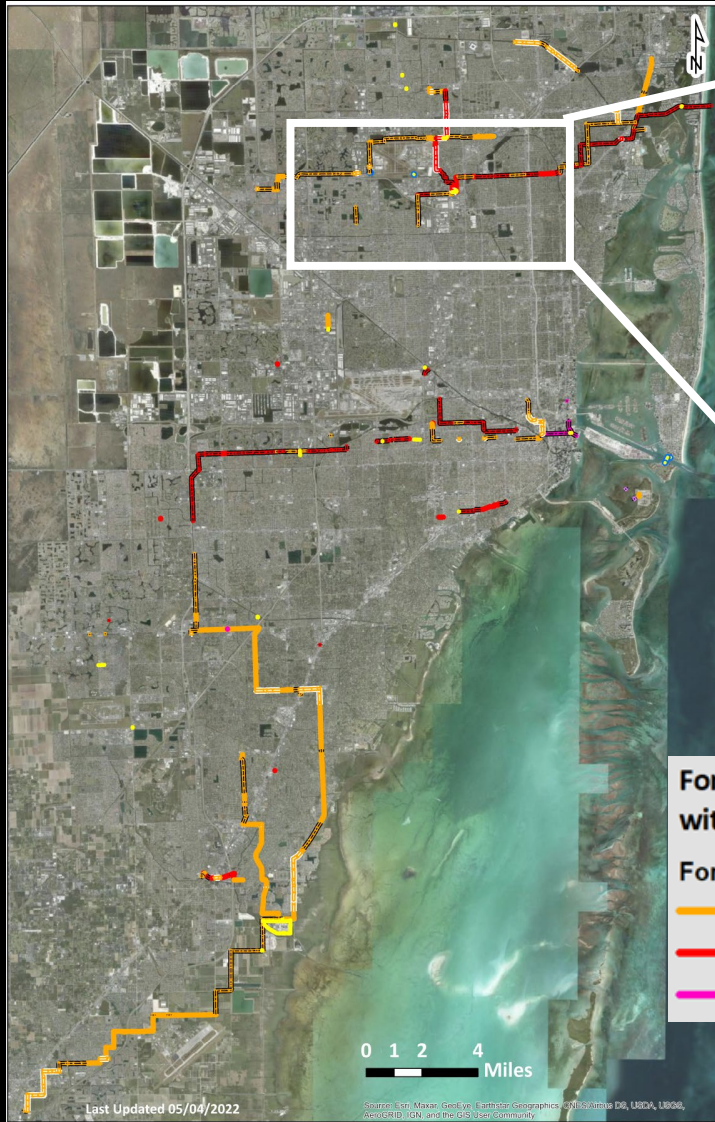
Failing Septic Tank Systems

2020: ~2,000

2040: ~3,000

Partially submerged system

Prioritizing Replacement of Largest and Oldest Force Mains



Total cost of replacing large-diameter force mains aged 50 years or greater is ~\$200,000,000



The Future of Waste-to-Energy in Miami-Dade

- Current Resources Recovery Facility (RRF) was built in 1982
- 1,100,000 tons of solid waste processed annually at RRF 24/7
- Studies are now under way to construct a new, modern facility
- Our ultimate goal is to own a fleet of electric-powered waste collection vehicles, charged at our own waste-to-energy facility

The Future of Recycling in Miami-Dade: Materials Recovery Facility (MRF)

- DSWM is developing a solicitation to construct a state of the art Materials Recovery Facility (MRF)
- Example: Reuters Materials Recovery Facility
 - Recycling processing plant
 - Owned and operated by Waste Management, Inc.
 - Located in Pembroke Pines, FL
 - Processes, separates and markets recyclables Removes contamination
 - Non-recyclable items are removed and disposed of at a disposal site
 - Recyclables are baled and shipped to manufacturers



Infrastructure Investment and the Economy

Jimmy Morales

Chief Operations Officer,
Office of Mayor Daniella Levine Cava
Miami-Dade County

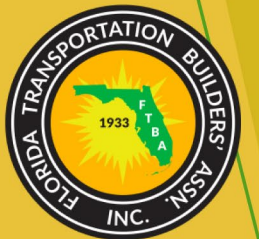


2022 SMART Trends Transportation Summit

Ananth Prasad

President

Florida Transportation Builders' Association



FTBA

- Since its formation in 1933, FTBA serves as the voice of transportation infrastructure industry in the State of Florida.
- Over 500 members actively engaged in the construction of transportation infrastructure or in the furnishing materials, equipment or services for such construction projects.
- Members build over 95% of transportation infrastructure projects such as
 - Road and Bridge
 - Airport Runway
 - Transit and Rail
 - Trails



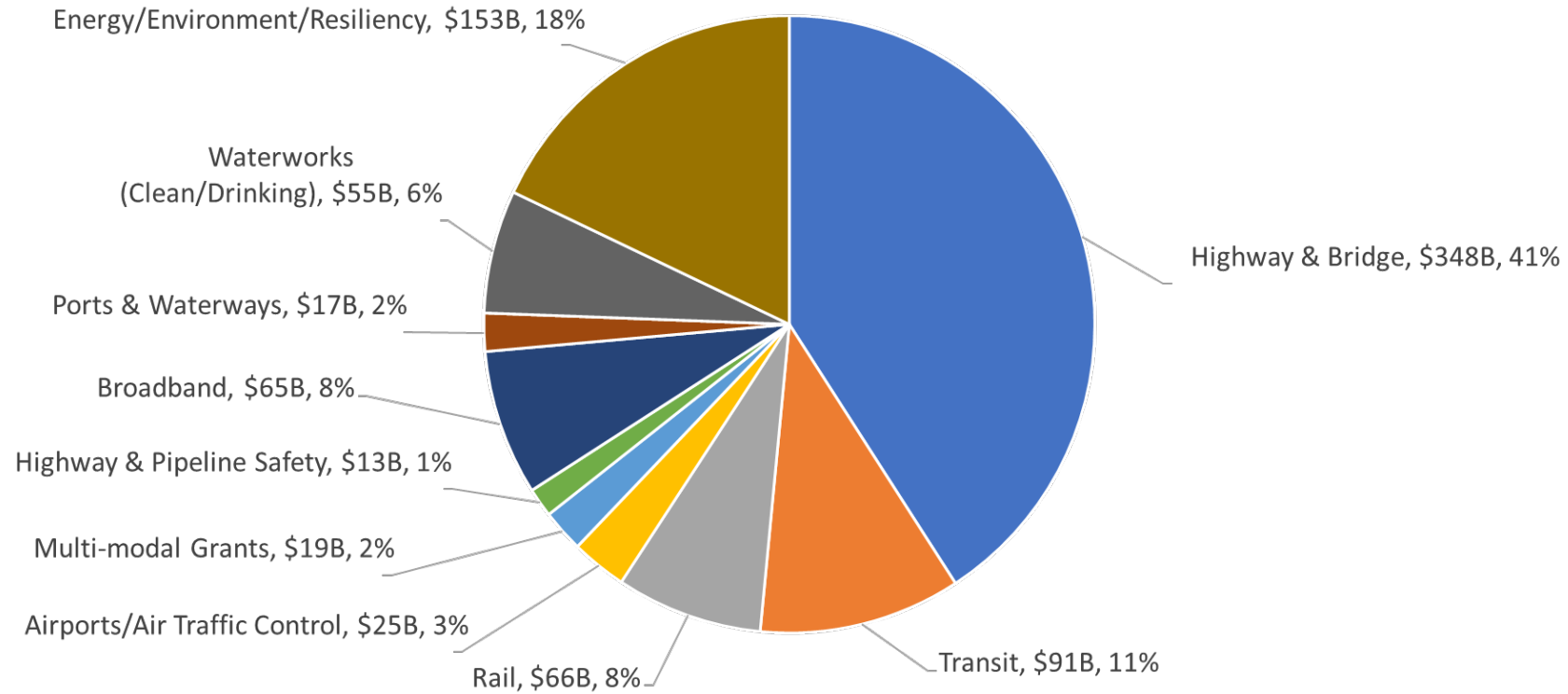
Infrastructure Investment and Jobs Act

In each of the next five years, the federal government will spend the equivalent of about 1 percent of G.D.P. on Roads, Bridges, Rail, Public Transit, Water Systems, Broadband, Power Systems and more.

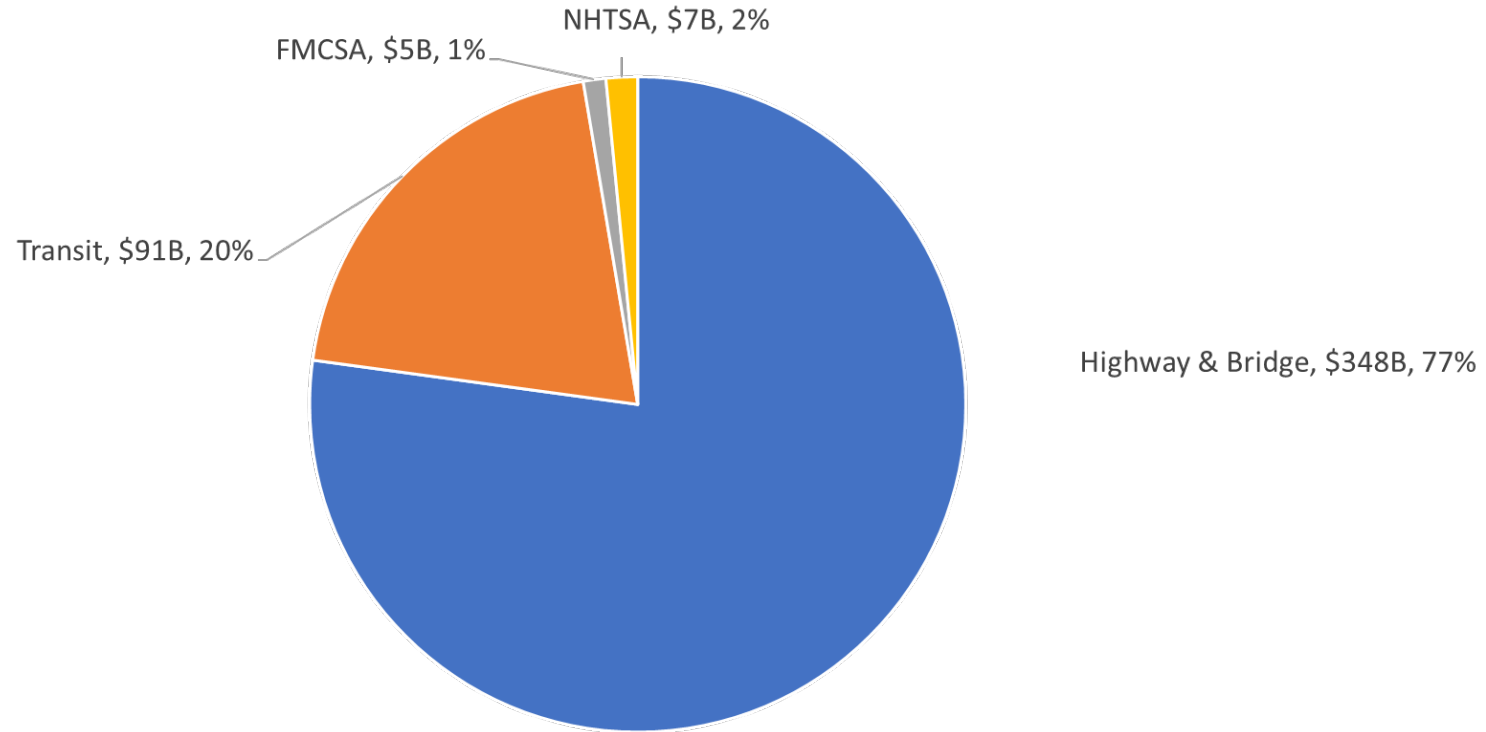
Largest Such investment in more than a generation. It will raise federal infrastructure spending to its highest share of G.D.P. since the early 1980s.



Breakdown of \$852 Billion in Guaranteed Funding in the Infrastructure Investment & Jobs Act

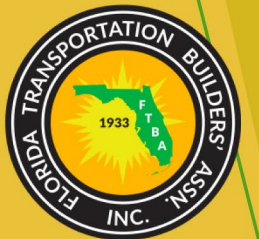


Breakdown of \$451 Billion in Core Surface Transportation Reauthorization Plus Supplemental Funding in the Infrastructure Investment & Jobs Act



Infrastructure Challenges

- Sustainable Funding
 - Federal Program's reliance on General Revenue
 - Gas Tax and Electric Vehicles
 - Resistance to Taxes, Tolls and Fees
 - Use of Gas Tax Dollars
- Workforce Development
 - Industry attractiveness
- Short Term Issues
 - Unprecedented Price Increases
 - Unprecedented Delays in Material Acquisition



Credits

US Department of Transportation

- American Road & Transportation Builders Association
- Florida Department of Transportation

